

Detroit: The Rest of the Story

Presentation to

**Marygrove College
and the**

W.K. Kellogg Foundation Fellows

Kurt Metzger

Director

Data Driven Detroit (D3)

October 11, 2012

Mission:



Data Driven Detroit provides accessible, high-quality information and analysis to drive informed decision-making.

D3 Toolbox



Data Driven Detroit's interactive tools for community engagement



www.DataDrivenDetroit.org

DATA
DRIVEN
DETROIT



Driving Detroit: The Quest for Respect in the Motor City

George Galster

I argue that most of what we see in the city is a result of what transpires in the suburbs and is beyond the power of the city to control.

The primary drivers of the region's economy and housing markets are geographically concentrated in Detroit's suburbs, though their reckless driving victimizes the city.

Similarly, the political and social dynamics of race and class polarization are characterized by a city-suburb dichotomy.

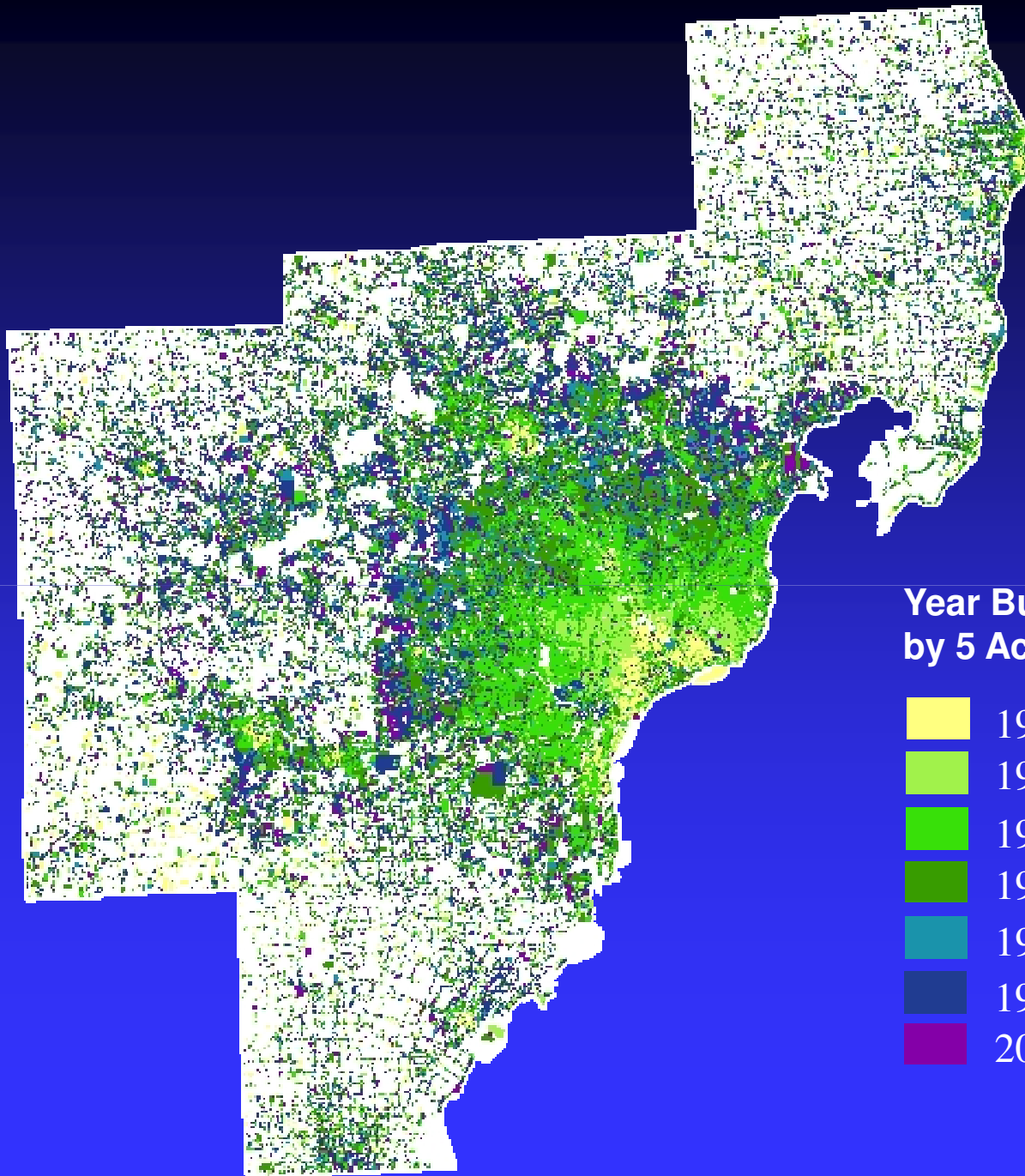
It is impossible to understand what drives the City of Detroit by looking only within its jurisdictional boundaries; a metropolitan perspective is required.

Detroit in 2012

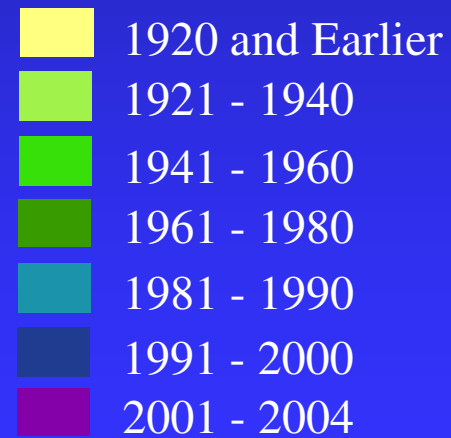
**“It was the best of times,
it was the worst of times.”**

Charles Dickens.....A Tale of Two Cities

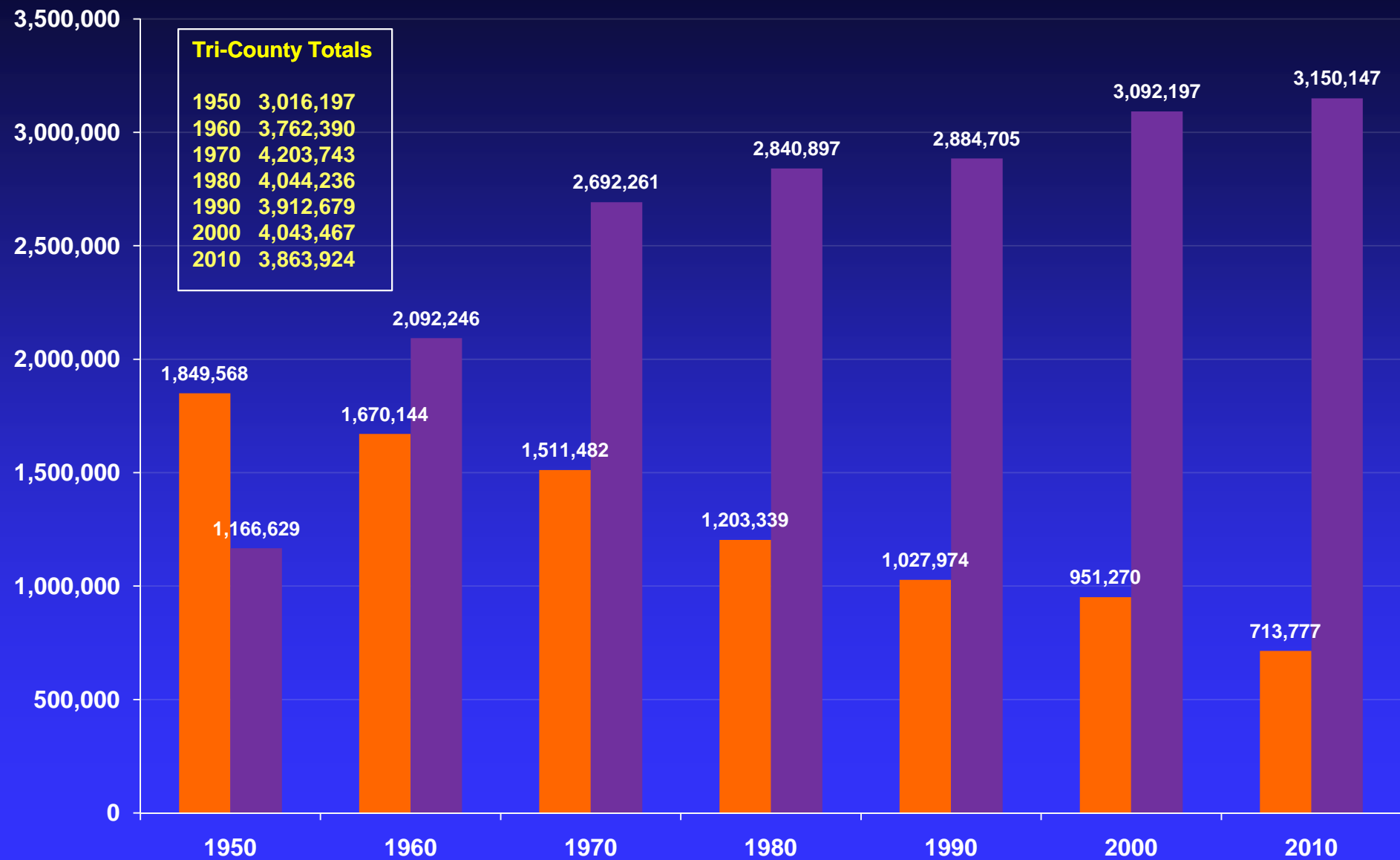
Development History



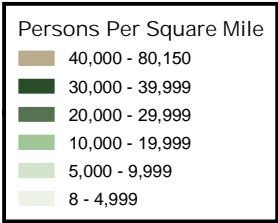
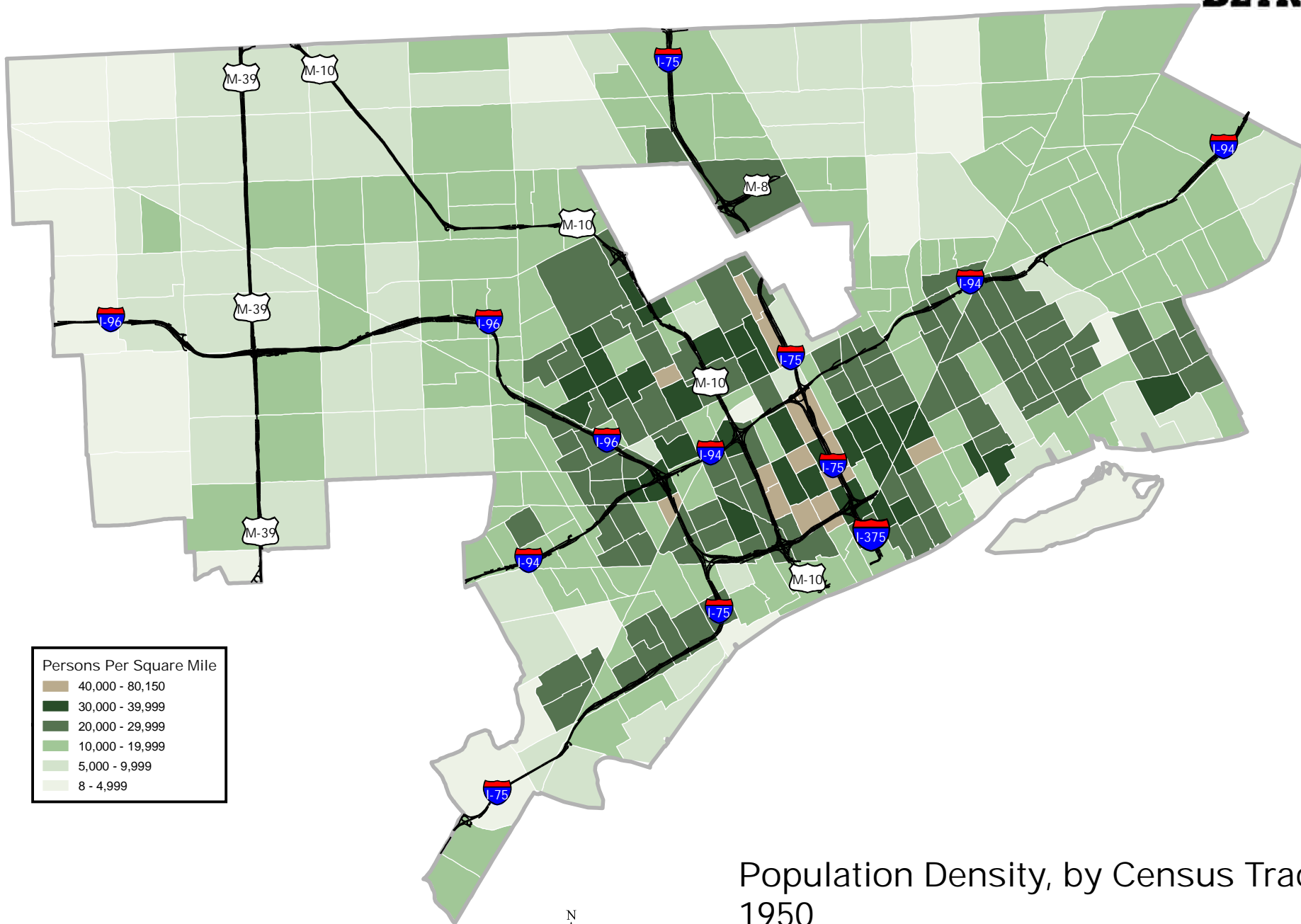
Year Built by 5 Acre Gridcells



Growth of Detroit Suburbs Post-World War II



Source: Census Bureau

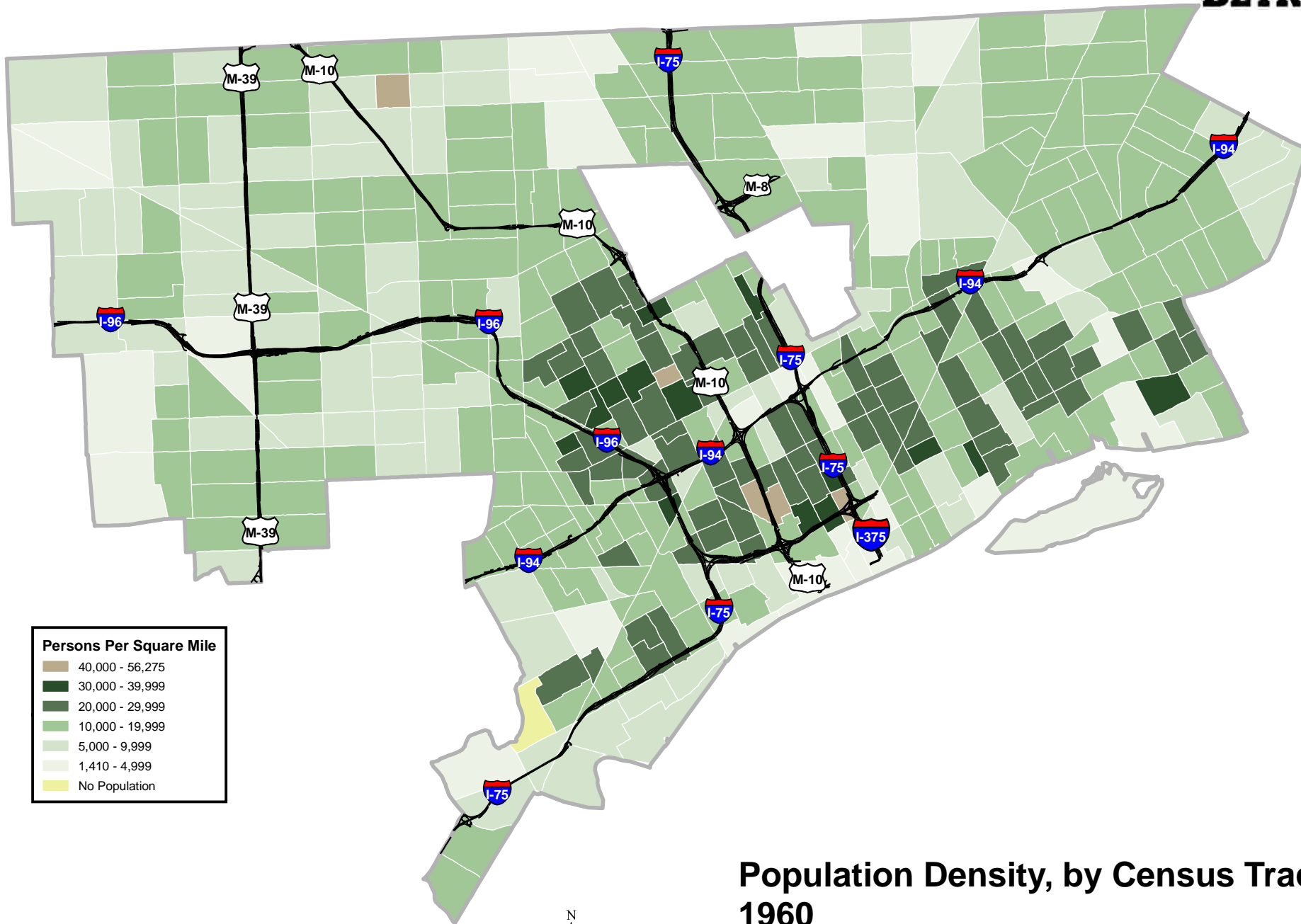


0 0.450.9 1.8
Miles

Sources: Data Driven Detroit, Wayne State University,
Claritas, Demographics Now, US Census Bureau 7/30/2010



Population Density, by Census Tract
1950
Detroit, Michigan

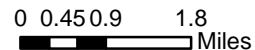
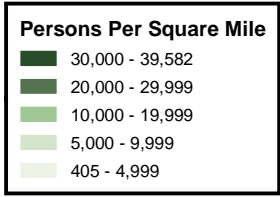


0 0.450.9 1.8
Miles



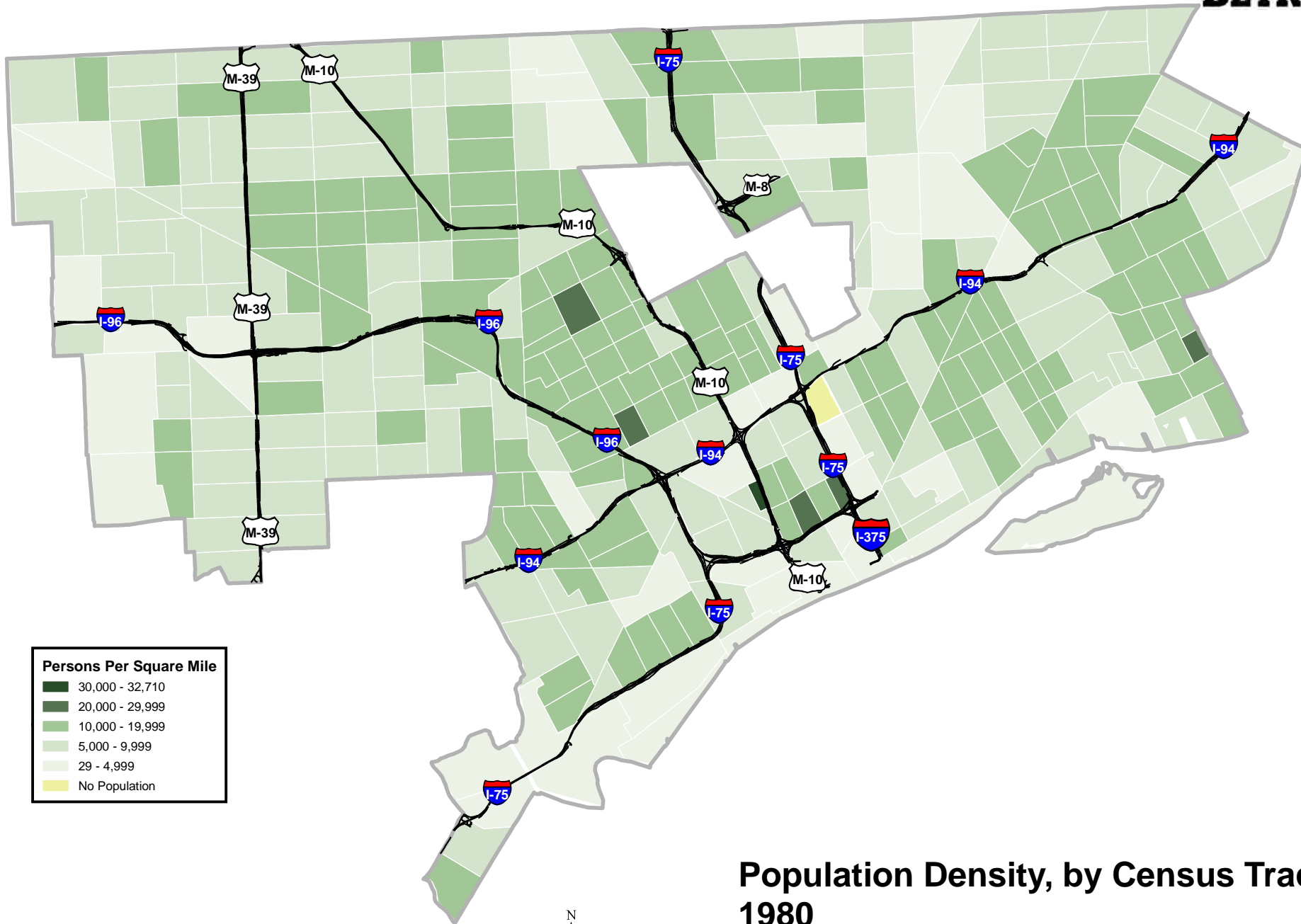
Sources: Data Driven Detroit, Wayne State University,
Claritas, Demographics Now, US Census Bureau 7/30/2010

Population Density, by Census Tract 1960 Detroit, Michigan



Sources: Data Driven Detroit, Wayne State University, Claritas, Demographics Now, US Census Bureau 7/30/2010

Population Density, by Census Tract 1970 Detroit, Michigan



0 0.450.9 1.8
Miles



Sources: Data Driven Detroit, Wayne State University,
Claritas, Demographics Now, US Census Bureau 7/30/2010

Population Density, by Census Tract 1980 Detroit, Michigan



Persons Per Square Mile

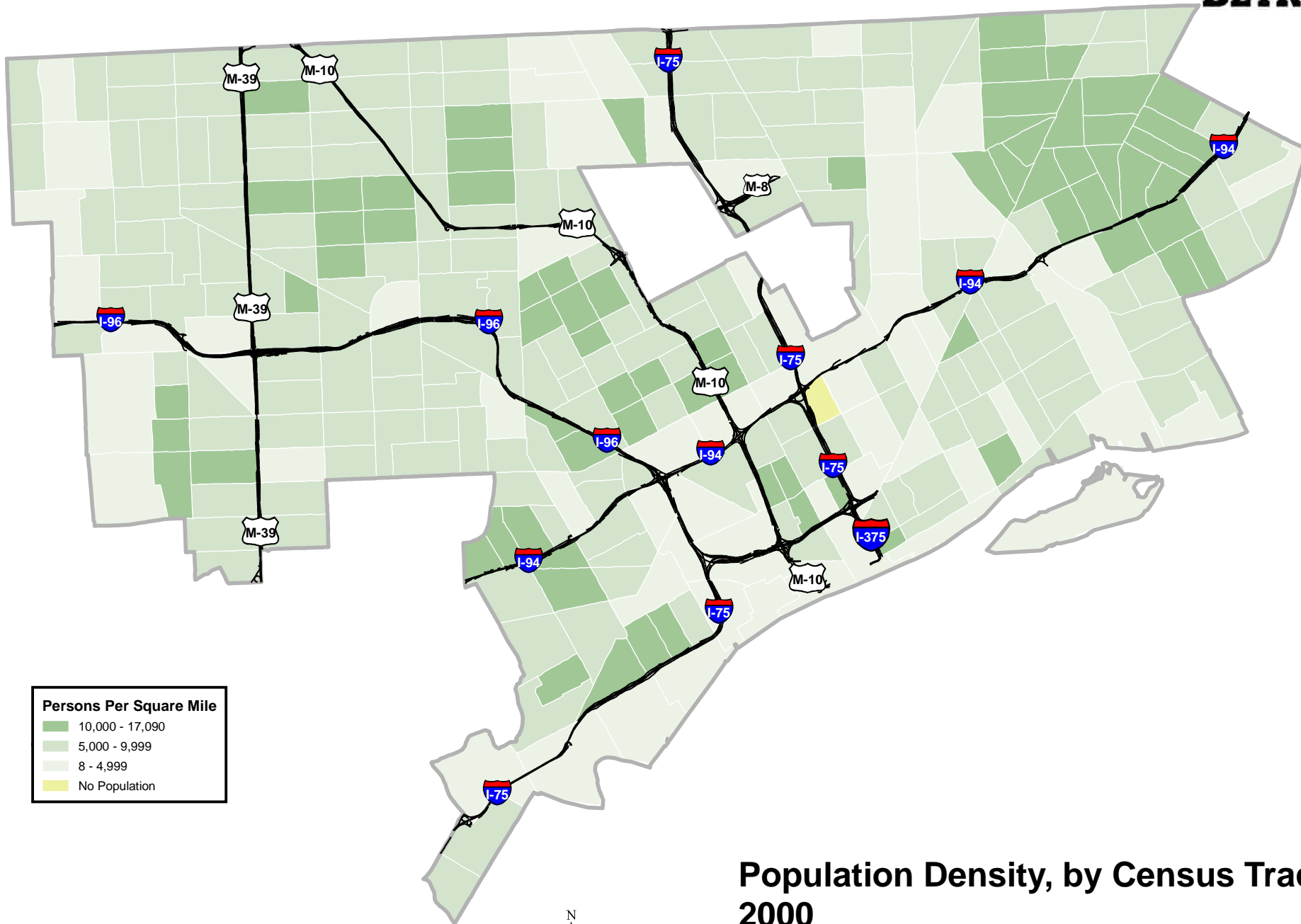
- 10,000 - 16,901
- 5,000 - 9,999
- 115 - 4,999
- No Population

0 0.450.9 1.8
Miles



Sources: Data Driven Detroit, Wayne State University,
Claritas, Demographics Now, US Census Bureau 7/30/2010

**Population Density, by Census Tract
1990
Detroit, Michigan**



Persons Per Square Mile

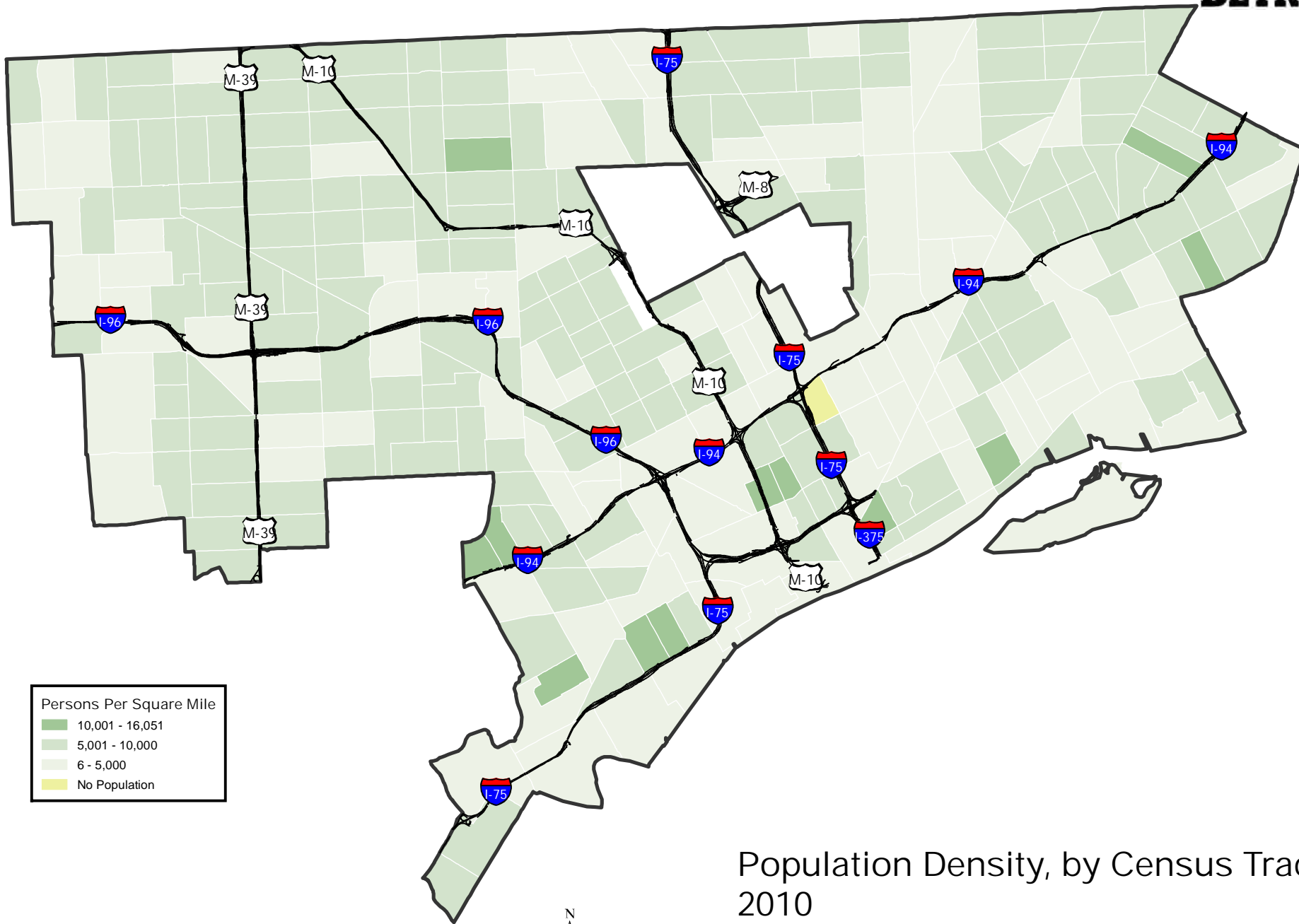
- 10,000 - 17,090
- 5,000 - 9,999
- 8 - 4,999
- No Population

0 0.450.9 1.8
Miles



**Population Density, by Census Tract
2000
Detroit, Michigan**

Sources: Data Driven Detroit, Wayne State University,
Claritas, Demographics Now, US Census Bureau 7/30/2010



Persons Per Square Mile

- 10,001 - 16,051
- 5,001 - 10,000
- 6 - 5,000
- No Population

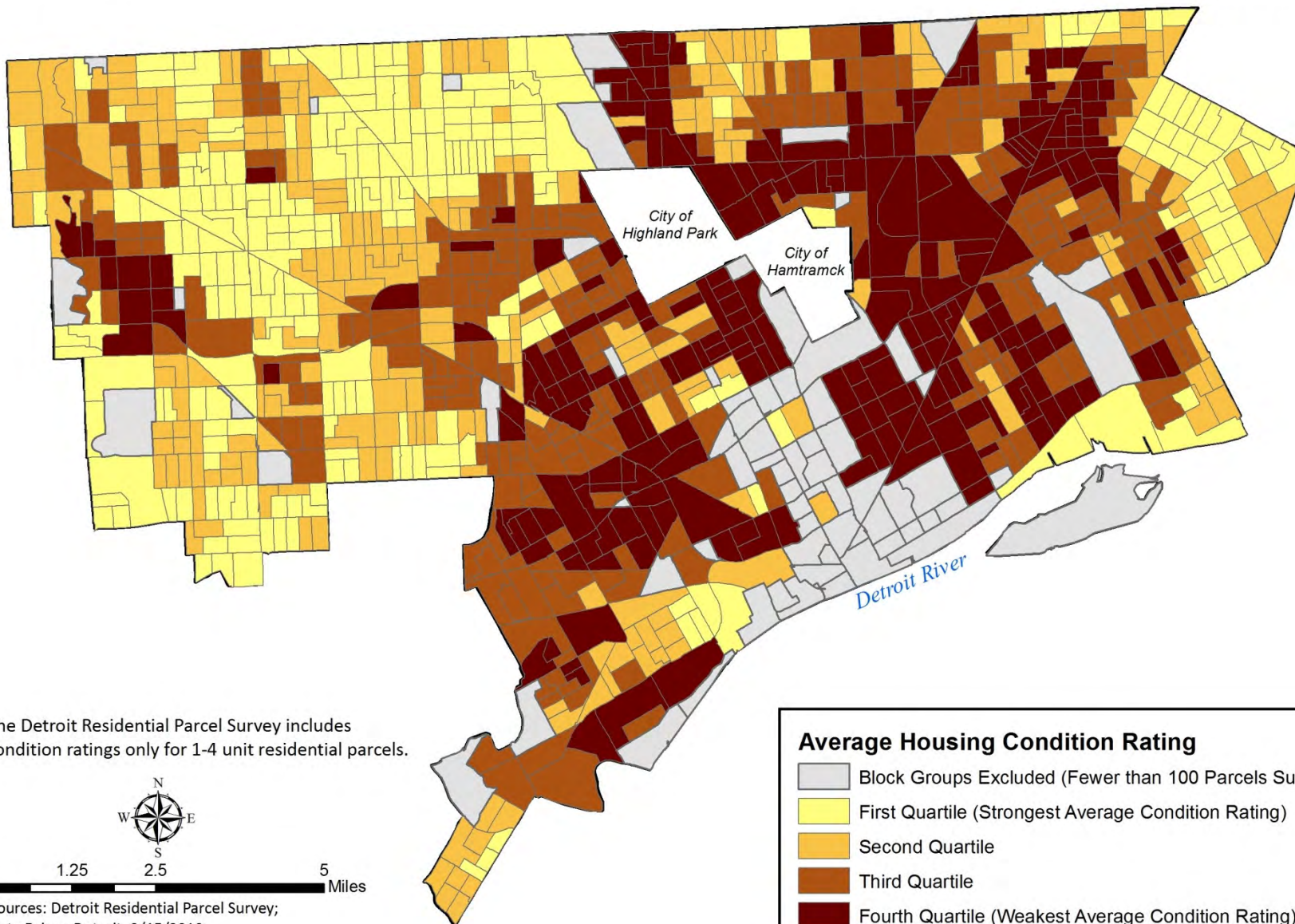
0 0.450.9 1.8
Miles



Population Density, by Census Tract
2010
Detroit, Michigan

Sources: Data Driven Detroit, Wayne State University,
Claritas, Demographics Now, US Census Bureau 4/10/2011

Average Housing Condition, by Census Block Group Detroit, Michigan



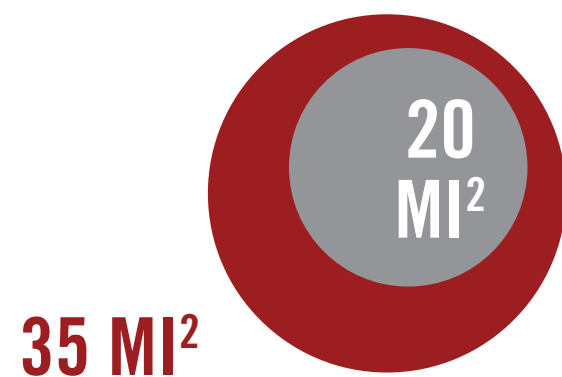
The Detroit Residential Parcel Survey includes condition ratings only for 1-4 unit residential parcels.



0 1.25 2.5 5 Miles

Sources: Detroit Residential Parcel Survey;
Data Driven Detroit. 2/15/2010

ENORMOUS SUPPLY & VERY LITTLE DEMAND



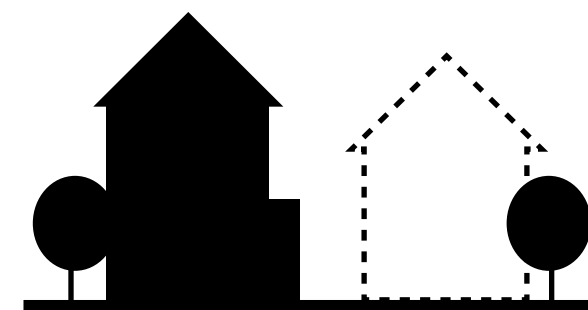
VACANT LAND

Of Detroit's 35 square miles of open space, 20 square miles are vacant and underutilized



WEAK MARKET

Current market demand for property in Detroit is extremely low

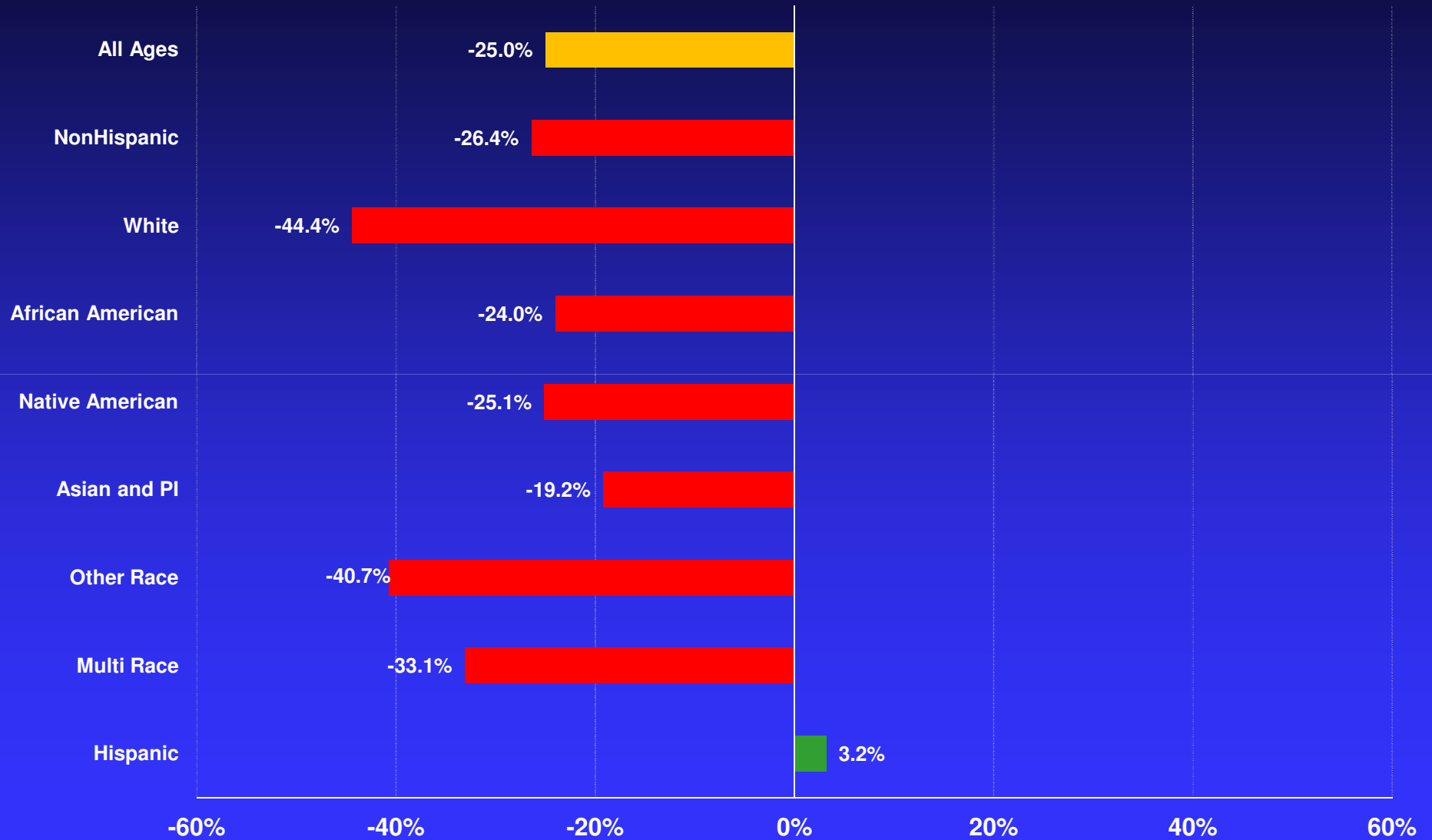


VARYING DENSITY

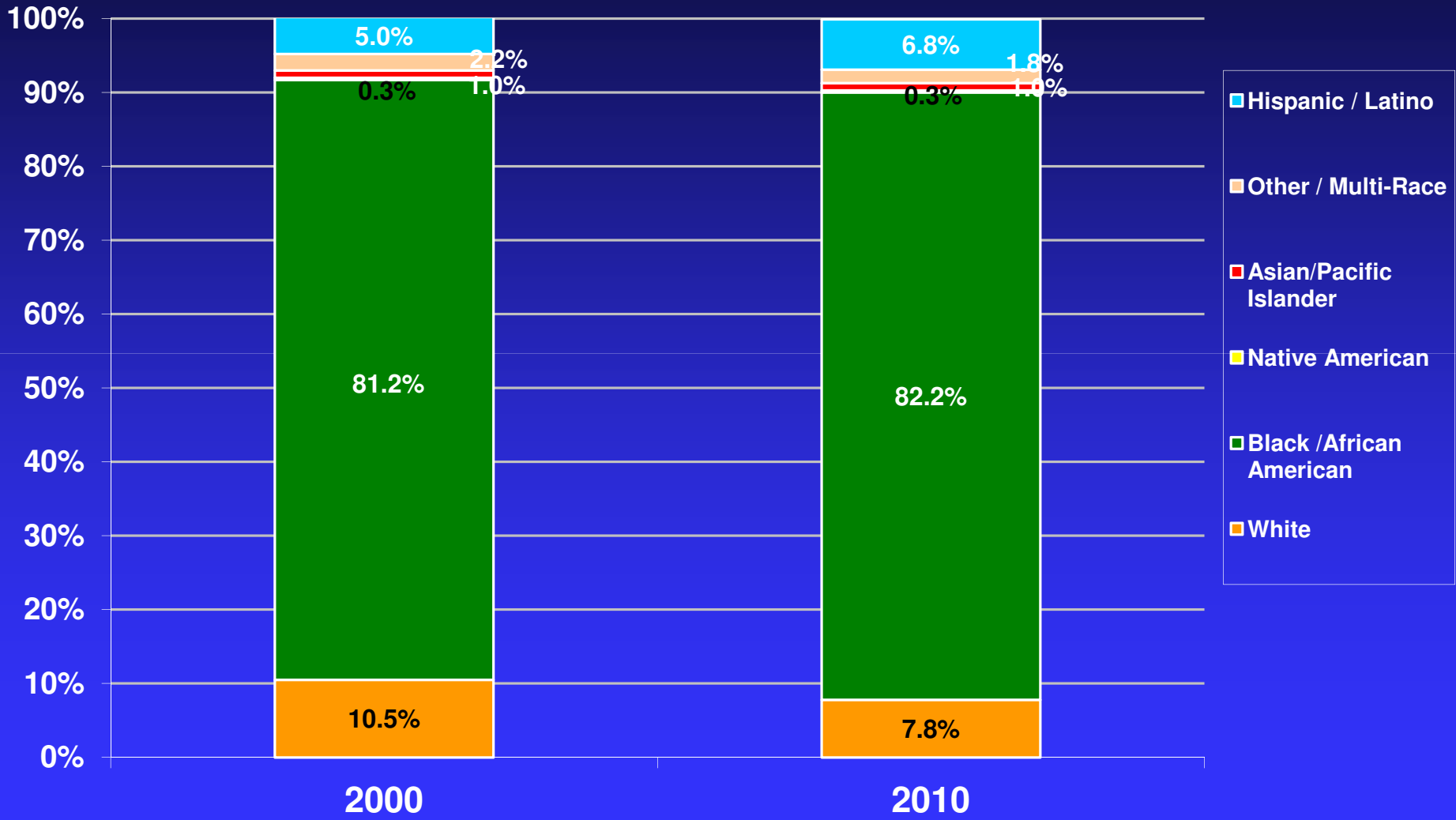
Varying population density throughout the city places an uneven burden on infrastructure systems

2000 – 2010 Population Change by Race/Ethnicity Group

CITY OF DETROIT



CITY OF DETROIT : Population by Race/Ethnicity: 2000 - 2010



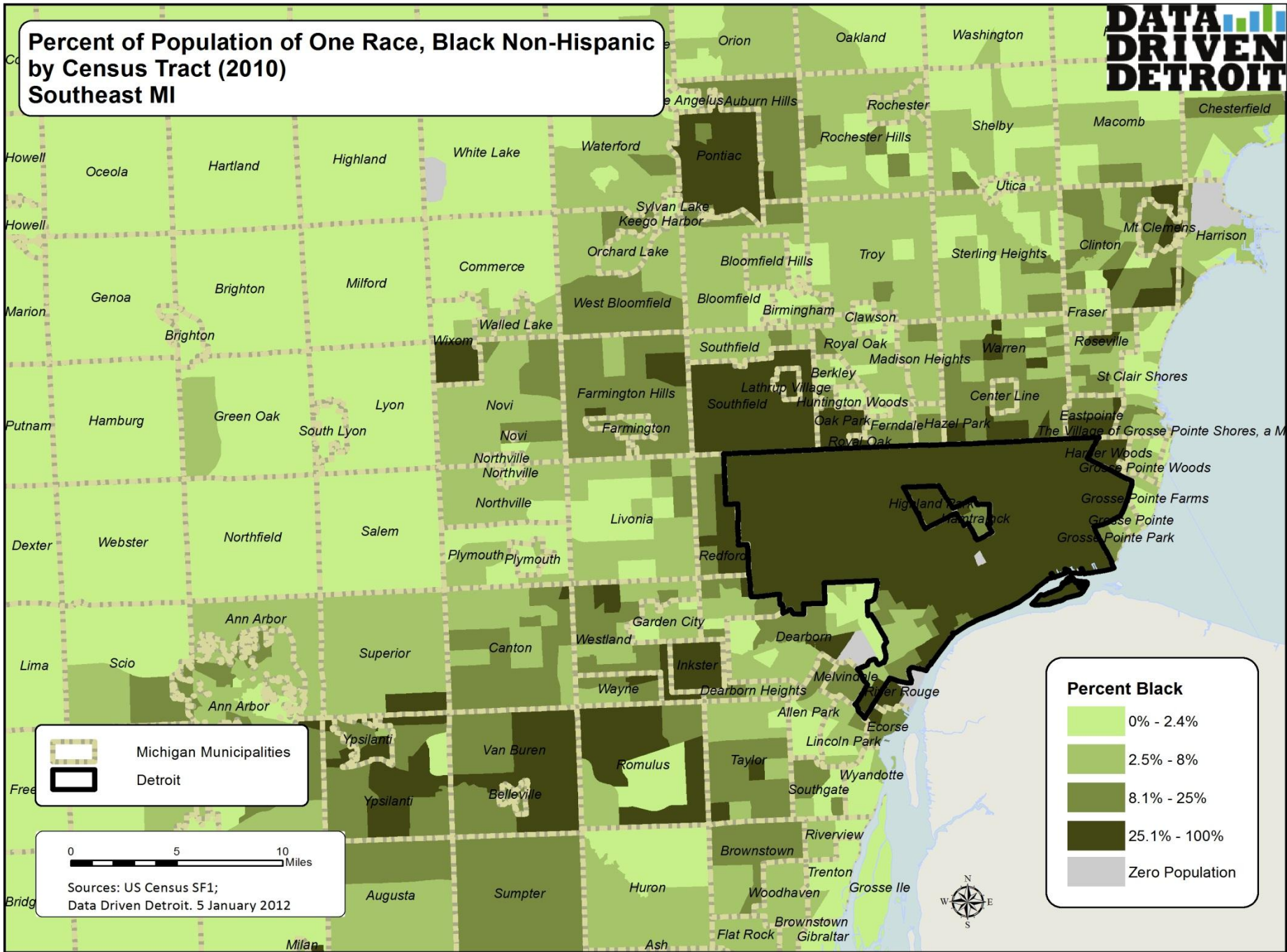
Source: Census Bureau

The Suburban Movement of the 1990s Increased Post-2000 With Exodus of African Americans From Detroit

	White	African American	Asian	Hispanic	Other/ Multi
Macomb	-16,189	50,902	8,176	6,660	2,664
Oakland	-68,354	42,595	18,319	12,921	2,104
Washtenaw	3,642	3,826	6,746	5,021	2,530
Wayne	-126,804	-131,826	10,659	18,053	-10,316
Out-Wayne	-82,487	53,567	12,445	16,541	-3,327
Detroit	-44,317	-185,393	-1,786	1,512	-6,989

Source: Census Bureau

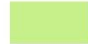




Percent of Population of One Race, Black Non-Hispanic by Census Tract (2010) Southeast MI



 Michigan Municipalities
 Detroit

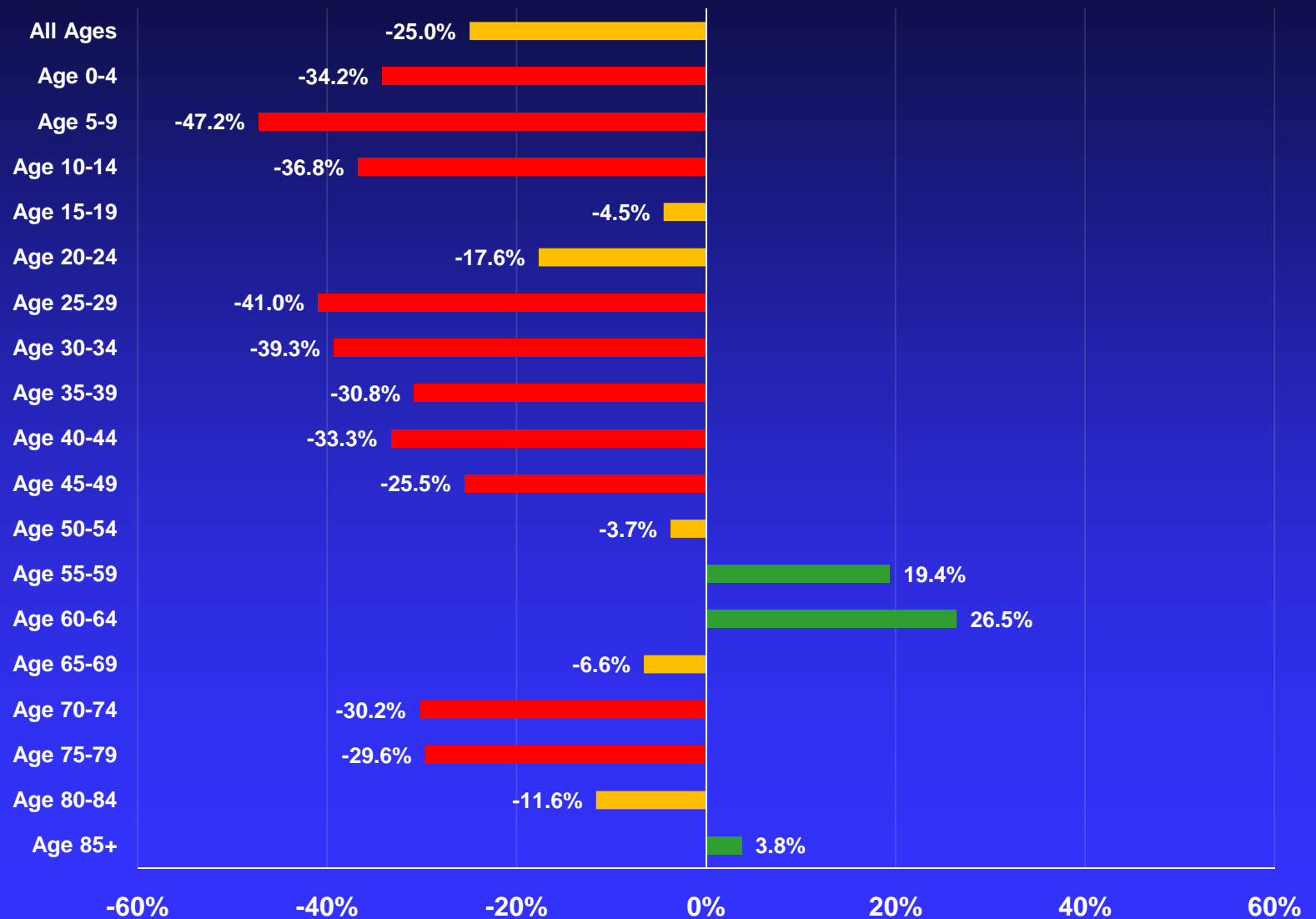
0 5 10 Miles
 Sources: US Census SF1;
 Data Driven Detroit. 5 January 2012

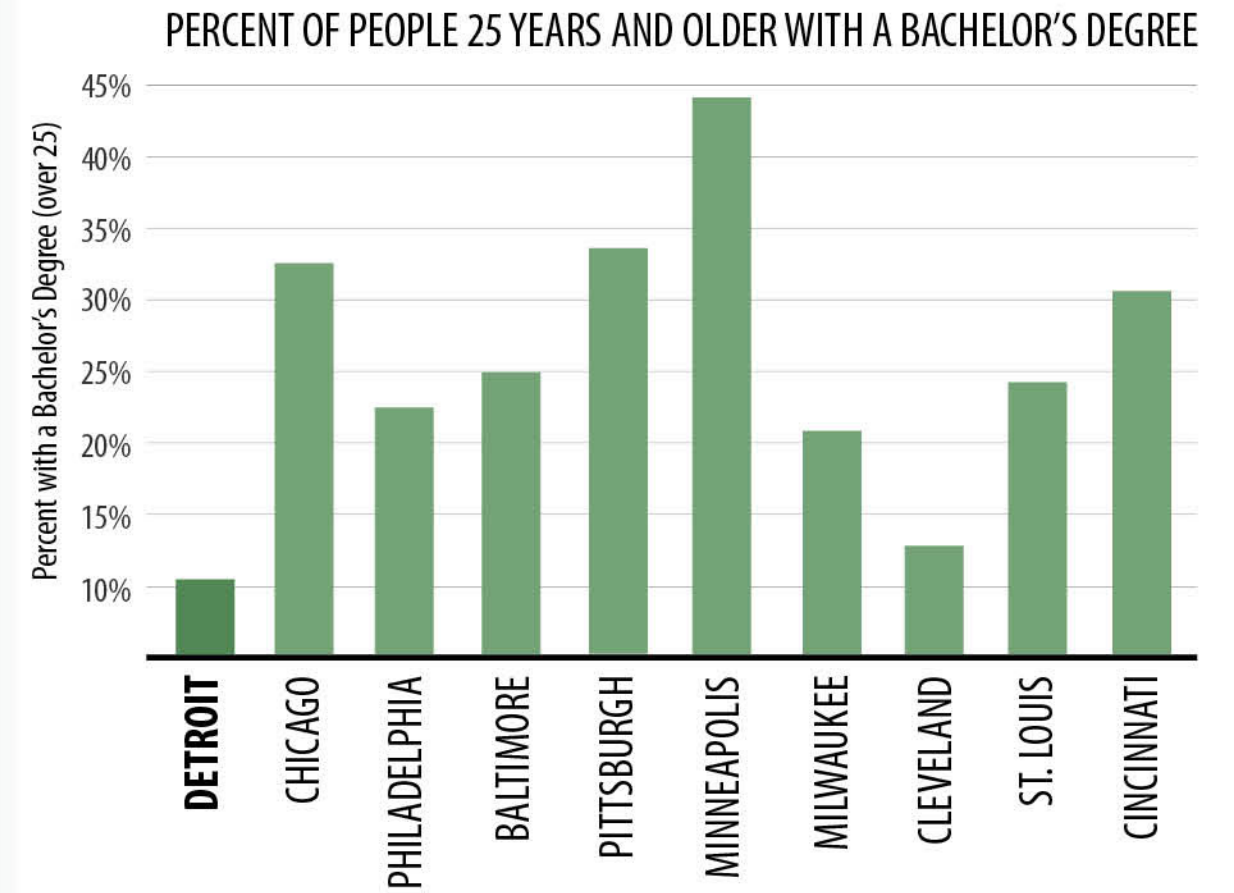
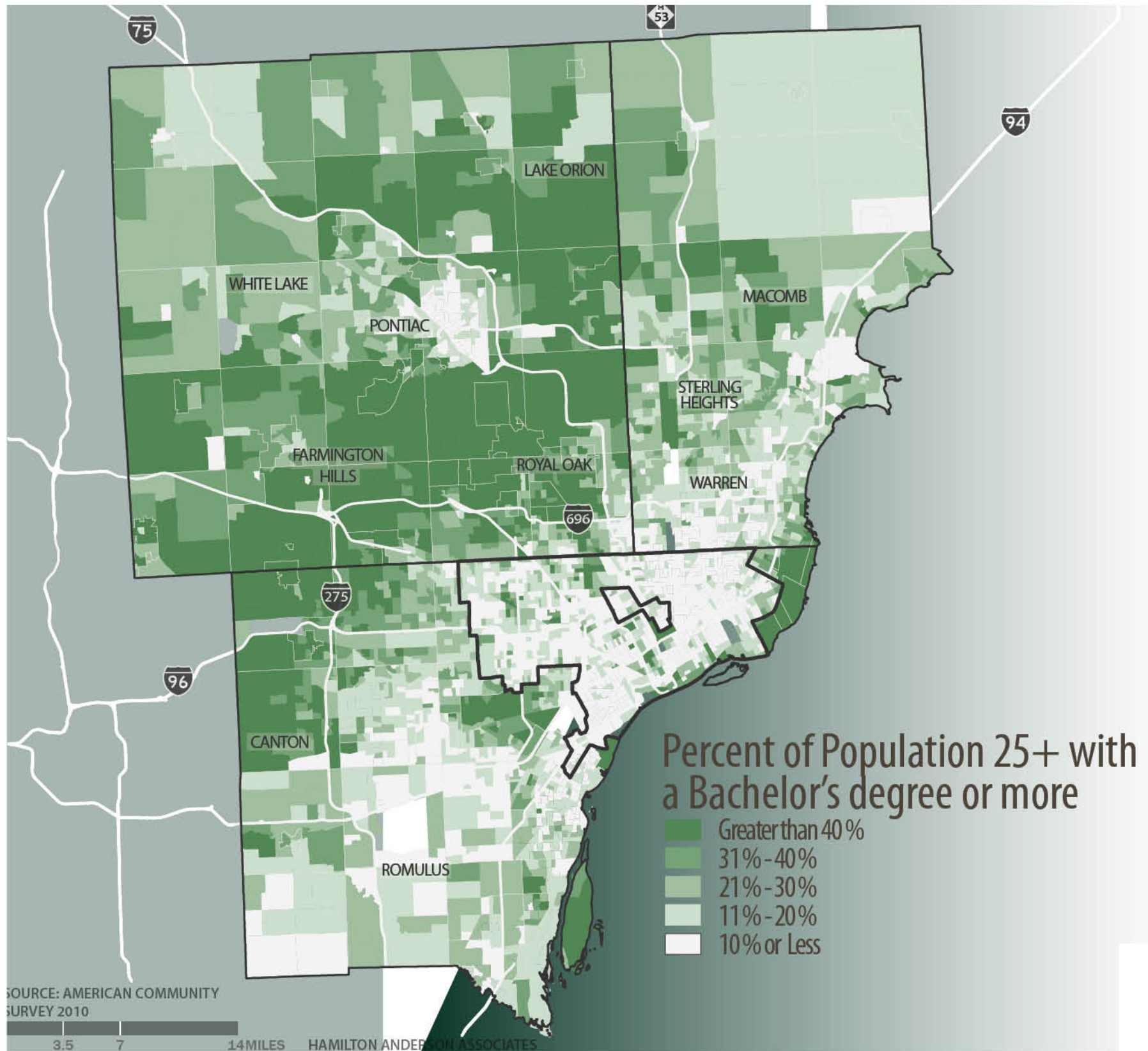
Percent Black

	0% - 2.4%
	2.5% - 8%
	8.1% - 25%
	25.1% - 100%
	Zero Population



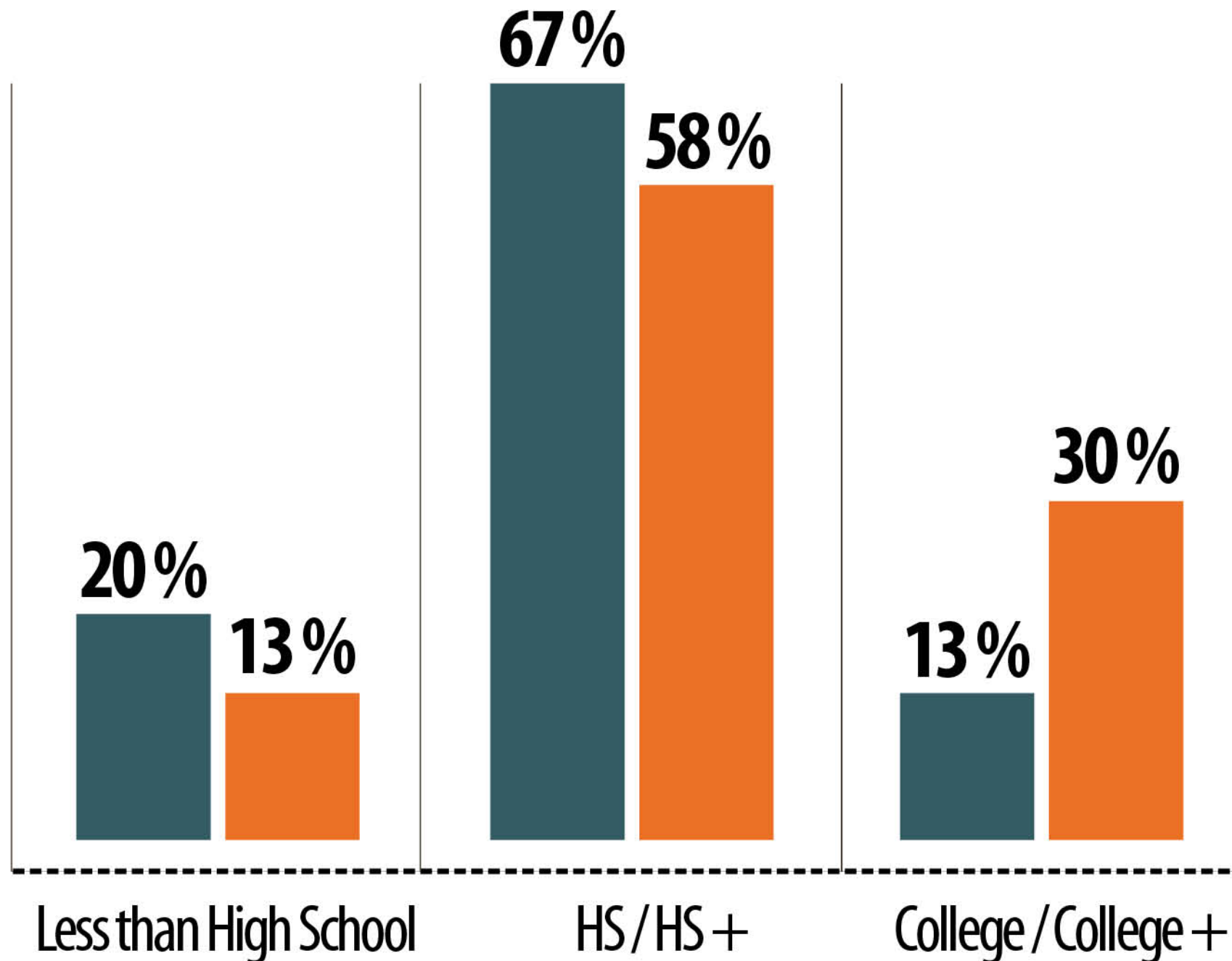
2000 – 2010 Population Change by Age Group DETROIT





This map shows the amount of college educated adults living in Detroit as compared to the surrounding region; as well as other cities around the country.

CHALLENGE: WORKFORCE



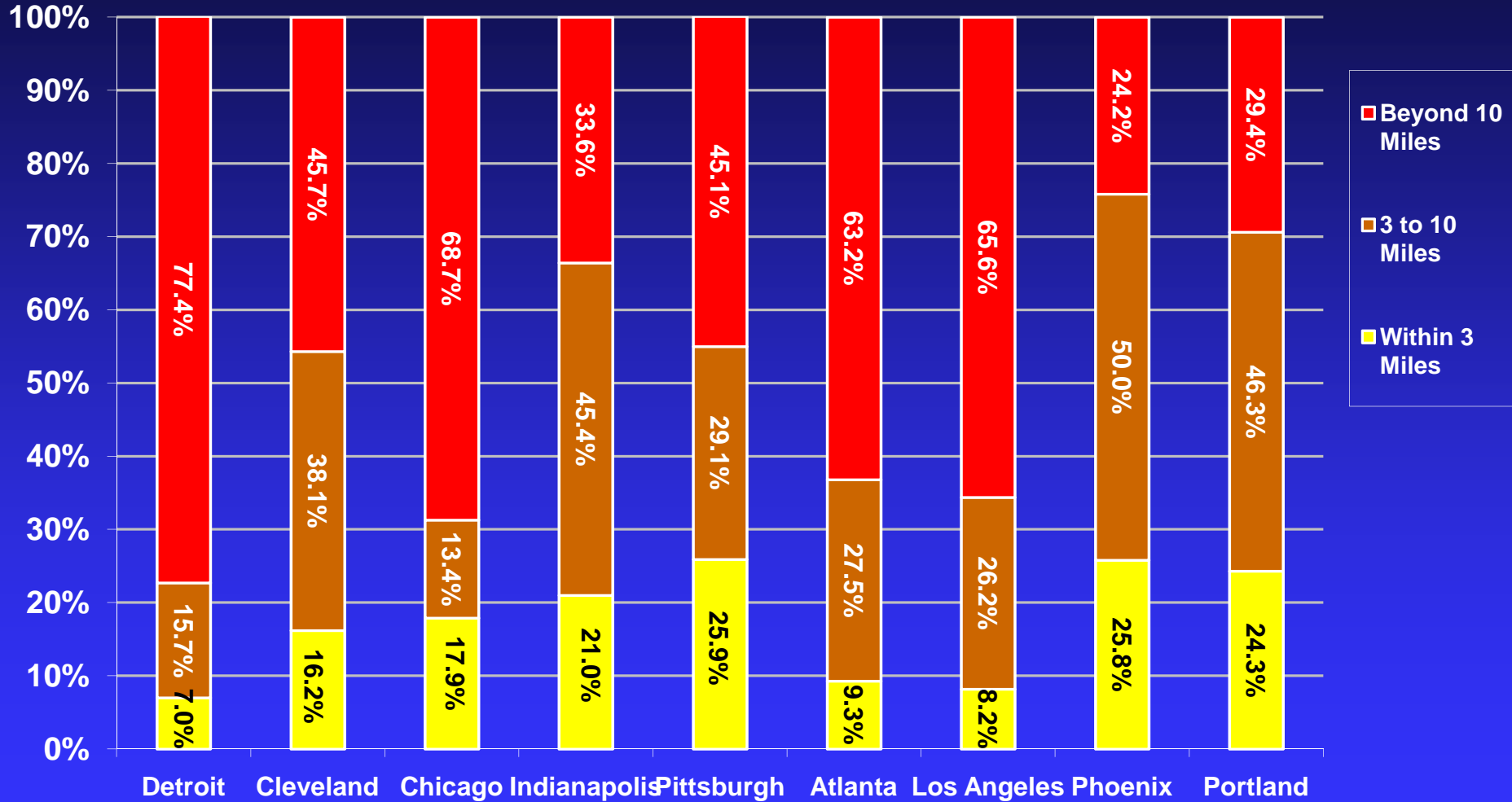
DETROIT RESIDENT EDUCATION LEVELS COMPARED TO THE U.S.

All Residents Aged 25 - 64

SOURCES: ACS 2009; BLS SEPT. 2010 1.3

- Twenty percent of Detroit's residents do not have a high school degree, a rate that is 50% higher than the national average.
- American workers without a high school degree have suffered declines in real wages and difficulty in securing employment.
- The current economic slowdown has disproportionately affected these workers. The unemployment rate among those who did not complete high school is currently about 15% compared to 5% for workers with a college degree.
- Of the 25-64 year old residents without a high school degree, 33% are younger than 45, compared to the 17% in the rest of the region, 28% in Cleveland, and 12% in Pittsburgh.

Detroit is the Most Decentralized (Sprawled) Employment Metro in the U.S.



108,000 Jobs lost 1998-06 / 3.1% growth beyond 10 miles

Source: Brookings Institution, 2009 – *Job Sprawl Revisited*

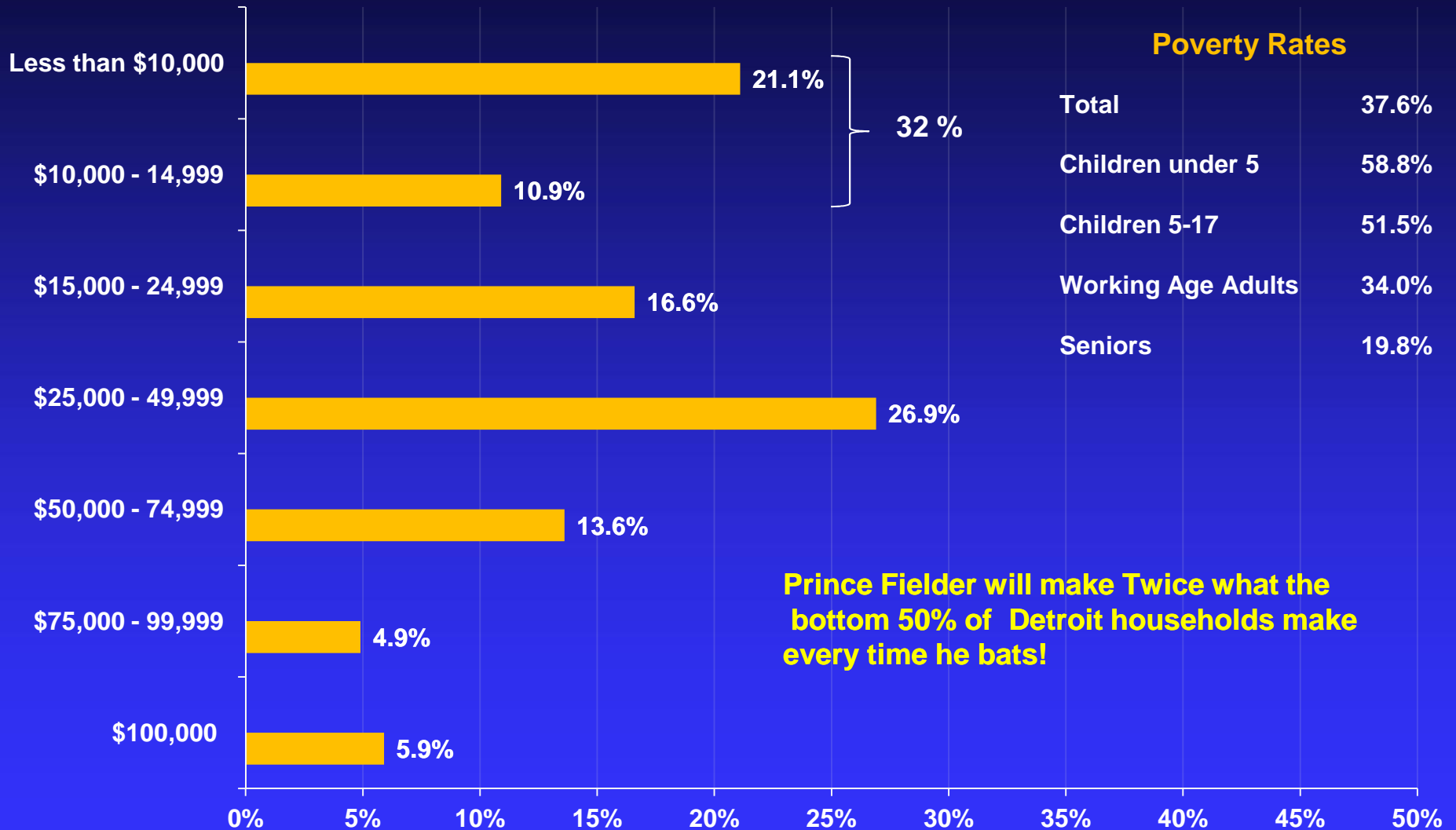
Household Incomes Throughout Michigan Have Decreased At Rates Three Times That of the Nation

	1999 (2000 Census)	2010 ACS	Change	Percent Change
<i>Median Household Income</i>				
United States	54,941	50,046	-4,905	-8.9%
Michigan	58,449	45,413	-13,036	-22.3%
Detroit MSA	64,348	48,198	-16,150	-25.1%
Macomb County	68,178	49,160	-19,018	-27.9%
Oakland County	81,008	60,266	-20,742	-25.6%
Wayne County	53,357	39,408	-13,949	-26.1%
City of Detroit	38,636	29,526	-12,849	-33.3%

Source: Census Bureau – 2000 Census and 2010 American Community Survey

* Note: All 1999 monetary values are adjusted to 2010 dollars using U.S. Consumer Price Research Series Index for All Urban Consumers (CPI-U-RS) from 1999 to 2009.
Source: U.S. Department of Labor

One Third of Detroit Households Get By On Less than \$15,000 – One Half With Less than \$25,000



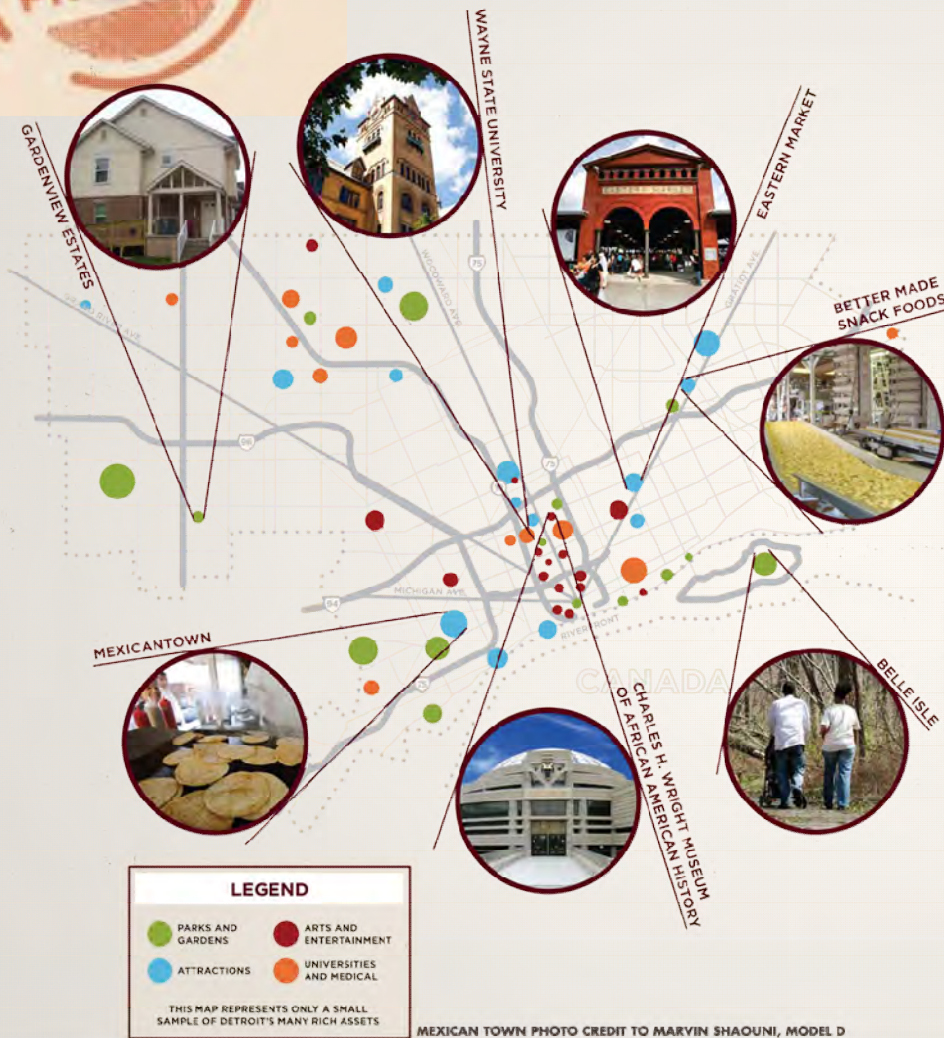
Source: Census Bureau – 2010 ACS

The City Of Detroit and Its Suburbs Are Vastly Different in a Number of Areas

	City	Suburbs		City	Suburbs
White, NH	8%	80%	College Grad +	12%	30%
African American	82 %	11%	Unemployment	33%	14%
Asian/PI	1%	4%	Household Income <\$25K	49%	23%
Latino	7%	3%	Housing Vacancy Rate	23%	8%
Foreign Born	5%	9%	No Vehicle Available	24%	6%

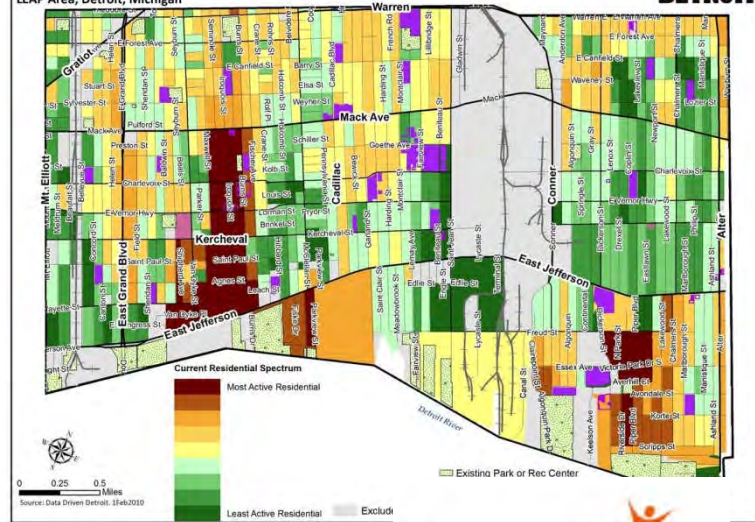
Source: Census Bureau – 2010 Census and
2010 American Community Survey

The DETROIT WORKS PROJECT



DRAFT Work Product: CDAD Strategic Framework
 Current Conditions Analysis: Residential
 LEAP Area, Detroit, Michigan

DATA DRIVEN DETROIT

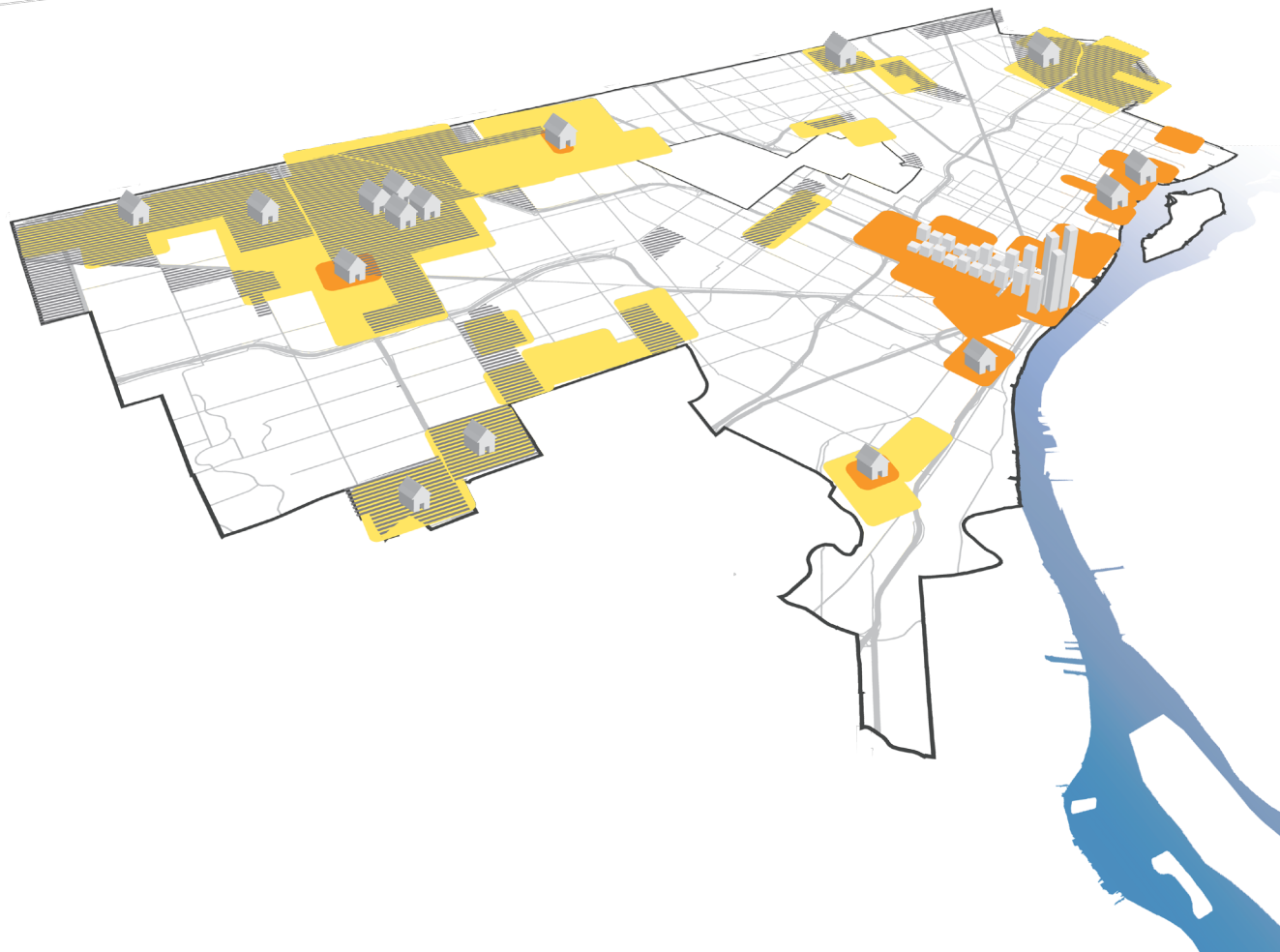






leap
 LOWER EASTSIDE ACTION PLAN



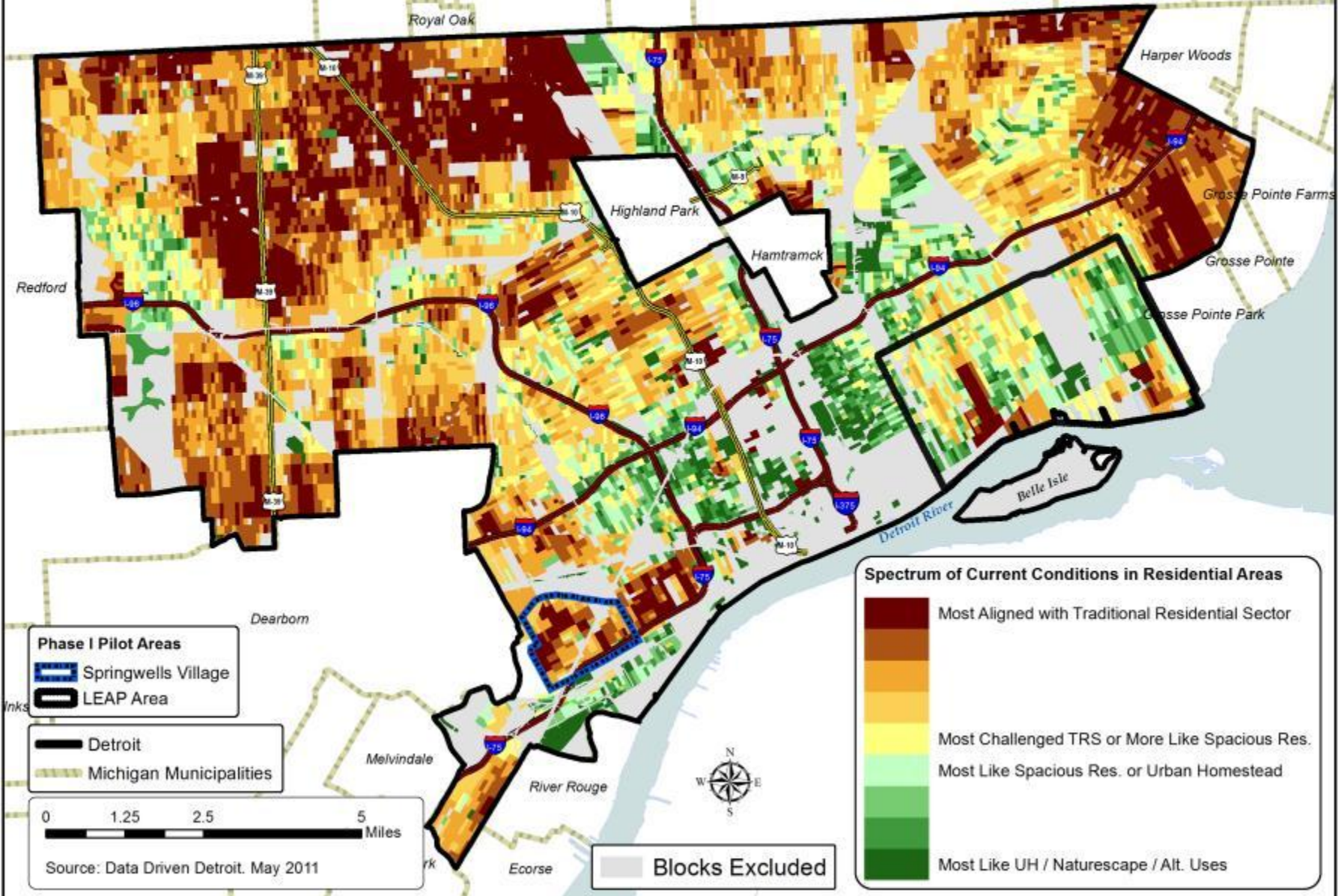
TRANSFORMATIVE IDEAS >>>>

DETROIT AS A CITY WITH A RANGE OF COMPACT, DISTINCT, AND
COMPETITIVE NEIGHBORHOODS



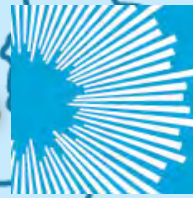
- NEIGHBORHOODS 
- NEIGHBORHOOD CENTERS 
- LOW VACANCY 1 
- DEVELOPMENTS 

CDAD Strategic Framework Typology Alignment
Current Conditions: Residential Areas
Detroit, MI

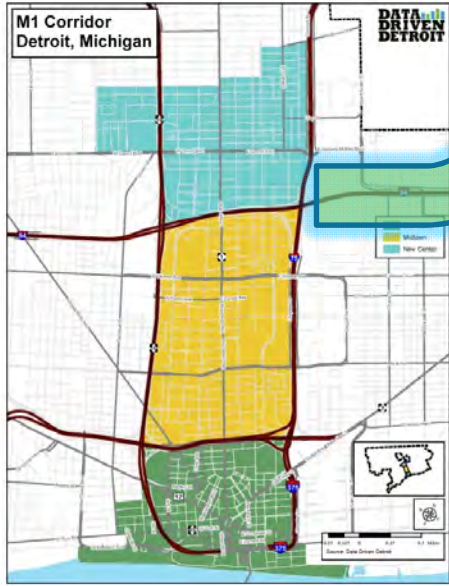




**new economy
initiative**
for southeast michigan



Living Cities
**INTEGRATION
INITIATIVE**
ALIGNING PEOPLE, PLACE & POLICY



15x15
15,000 YOUNG, TALENTED
HOUSEHOLDS BY 2015

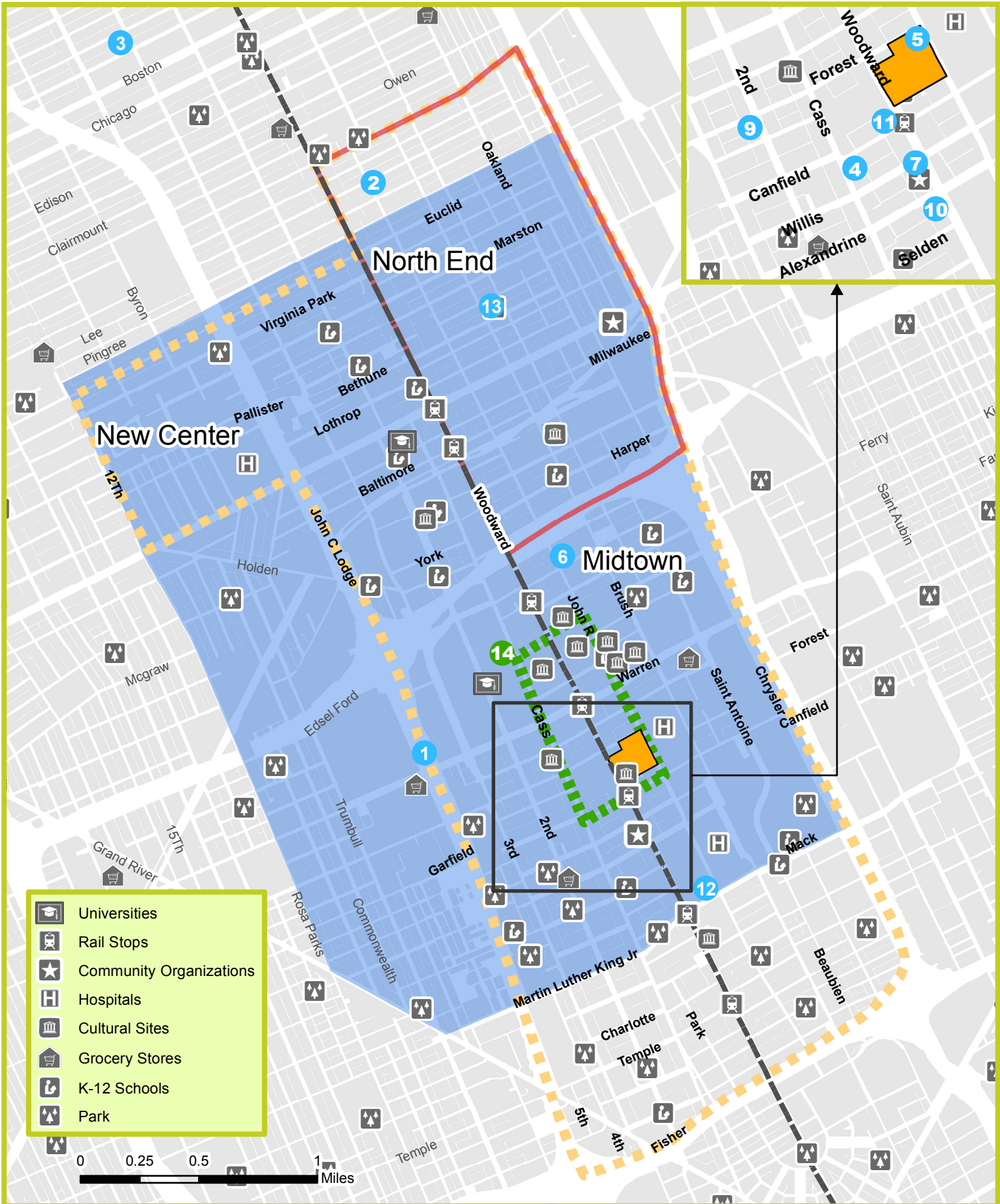
Anchor Institutions

**WAYNE STATE
UNIVERSITY**



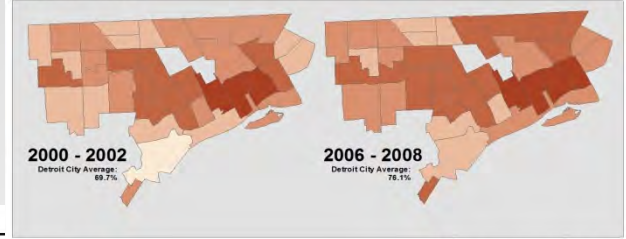
DMC
DETROIT MEDICAL CENTER

Woodward Corridor Initiative, Catalytic Investments, 2011



A voice for Detroit children since 1960

Percentage of Total Births to Unmarried Mothers by Subcommunity
Right Start in Detroit 2011



2016 Task Force

Results Oriented Leadership to Achieve
Community Change for Children

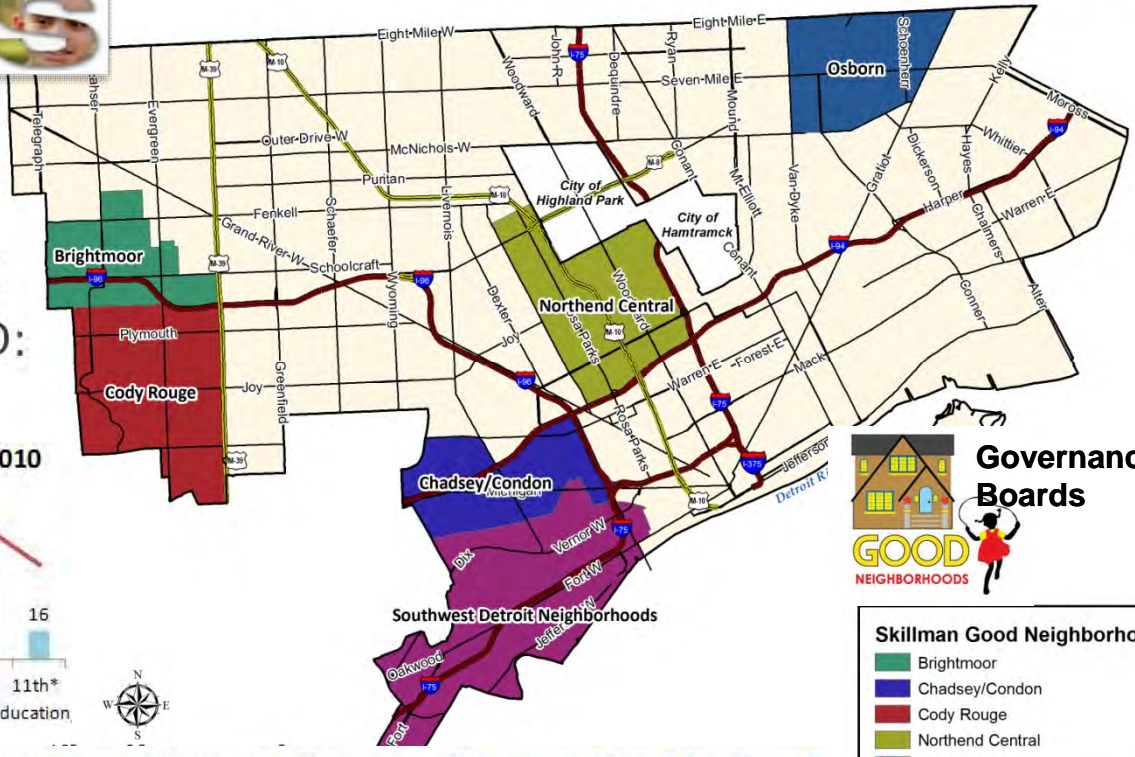
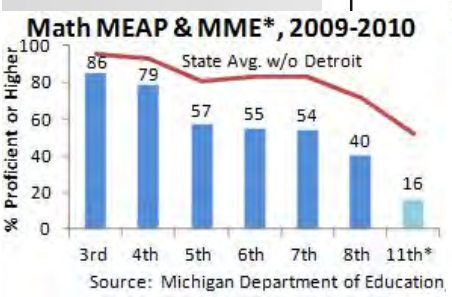
TOUGH BOYS

Food Neigh
Michigan



DATA DRIVEN DETROIT

STATE OF THE DETROIT CHILD: 2010



EXCELLENT SCHOOLS DETROIT



Governance Boards

- ### Skillman Good Neighborhoods
- Brightmoor
 - Chadsey/Condon
 - Cody Rouge
 - Northend Central
 - Osborn
 - Southwest Detroit Neighborhoods

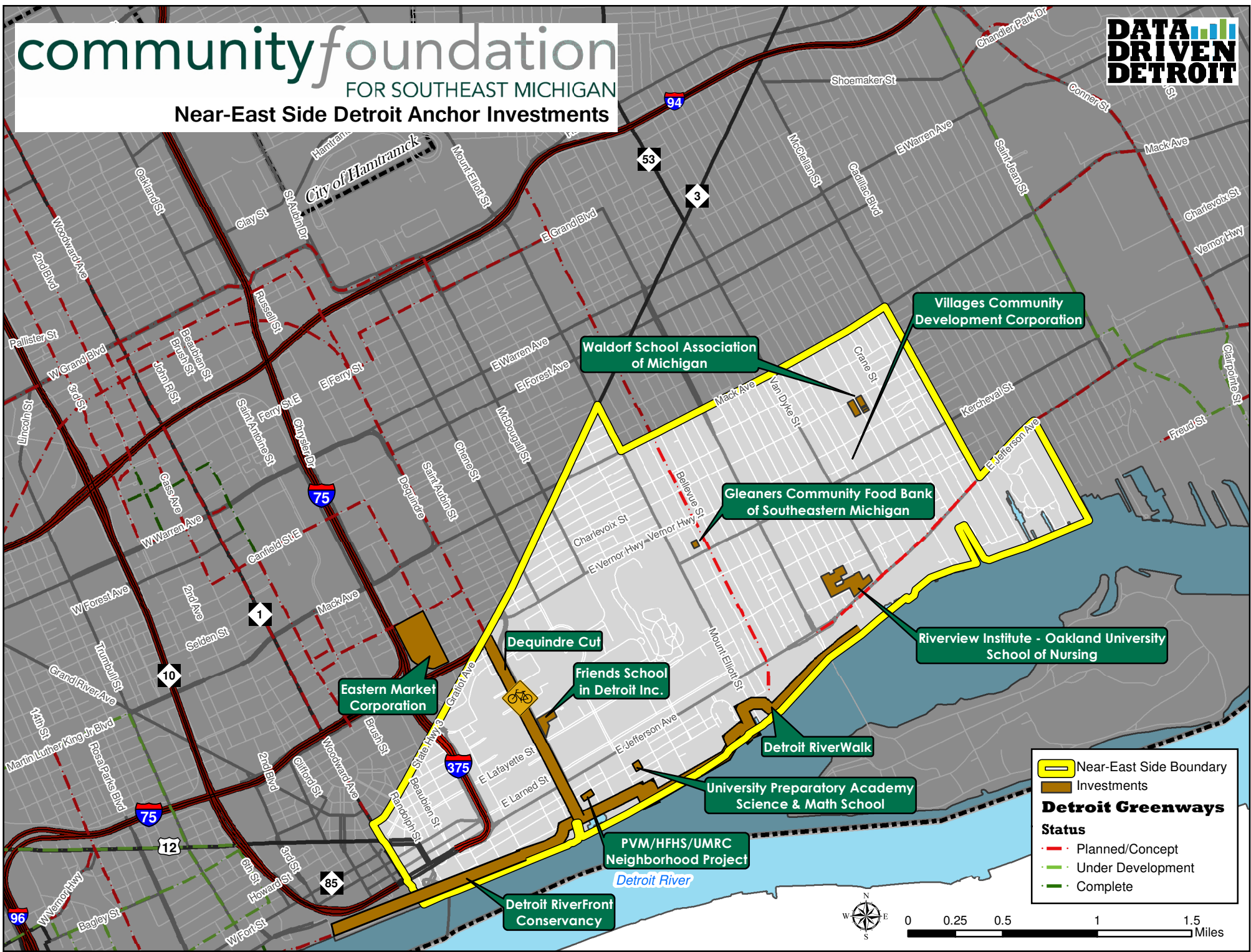


Quantitative Indicators of Detroit Neighborhood Contexts for Child Development

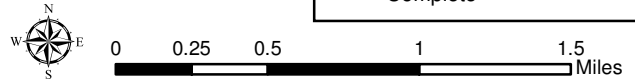
community foundation

FOR SOUTHEAST MICHIGAN

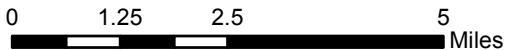
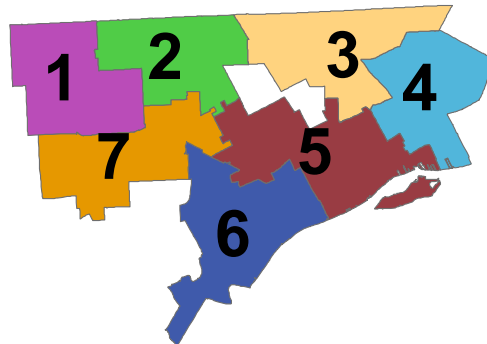
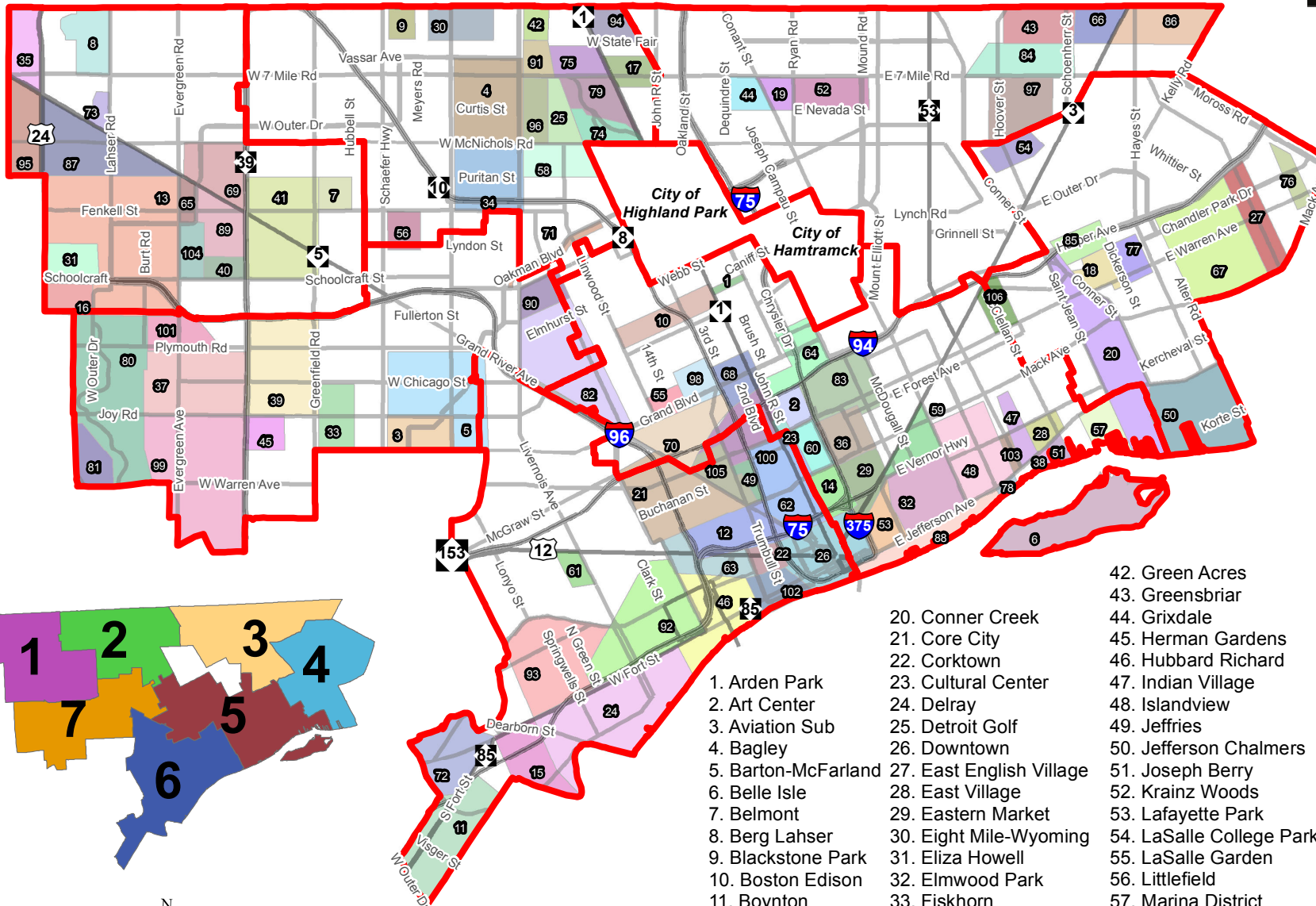
Near-East Side Detroit Anchor Investments



 Near-East Side Boundary
 Investments
Detroit Greenways
Status
 Planned/Concept
 Under Development
 Complete



Approved City Council Districts and Neighborhood Boundaries Detroit, Michigan

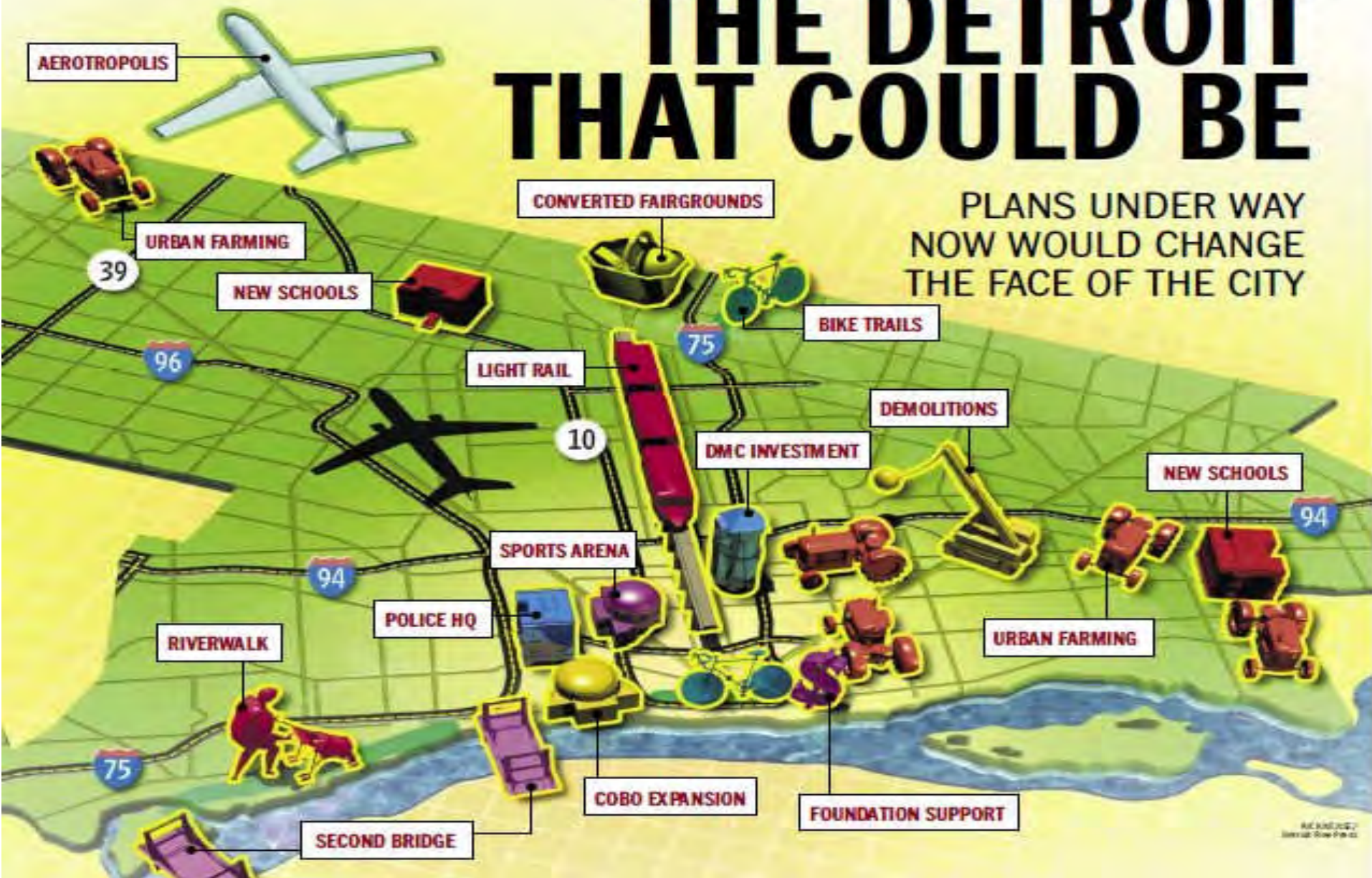


- 66. Mohican Regent
- 67. Morningside
- 68. New Center
- 69. North Rosedale Park
- 70. NW Goldberg
- 71. Oakman Blvd
- 72. Oakwood Heights
- 73. Old Redford
- 74. Palmer Park
- 75. Palmer Woods
- 76. Park - Baldock
- 77. Park - Chandler
- 78. Park - Gabriel Richard
- 79. Park - Palmer
- 80. Park - Rouge
- 81. Parkland
- 82. Petoski-Otsego
- 83. Poletown East
- 84. Pulaski
- 85. Ravendale
- 86. Regent Park
- 87. Riverdale
- 88. Rivertown
- 89. Rosedale Park
- 90. Russell Woods
- 91. Sherwood Forest
- 92. Southwest Detroit
- 93. Springwells
- 94. State Fair Ground
- 95. The Eye
- 96. University District
- 97. Von Steuben
- 98. Virginia Park
- 99. Warrendale
- 100. Wayne State
- 101. Weatherby
- 102. West Side Industrial
- 103. West Village
- 104. Westwood Park
- 105. Woodbridge
- 106. Gratiot Woods

- 42. Green Acres
- 43. Greensbriar
- 44. Grixdale
- 45. Herman Gardens
- 46. Hubbard Richard
- 47. Indian Village
- 48. Islandview
- 49. Jeffries
- 50. Jefferson Chalmers
- 51. Joseph Berry
- 52. Krainz Woods
- 53. Lafayette Park
- 54. LaSalle College Park
- 55. LaSalle Garden
- 56. Littlefield
- 57. Marina District
- 58. Martin Park
- 59. McDougall-Hunt
- 60. Medical Center
- 61. Michigan Martin
- 62. Midtown
- 63. Millenium Village
- 64. Milwaukee Junction
- 65. Minock Park
- 20. Conner Creek
- 21. Core City
- 22. Corktown
- 23. Cultural Center
- 24. Delray
- 25. Detroit Golf
- 26. Downtown
- 27. East English Village
- 28. East Village
- 29. Eastern Market
- 30. Eight Mile-Wyoming
- 31. Eliza Howell
- 32. Elmwood Park
- 33. Fiskhorn
- 34. Fitzgerald
- 35. Five Points
- 36. Forest Park
- 37. Franklin Park
- 38. Gold Coast
- 39. Grandale
- 40. Grandmont #1
- 41. Grandmont-Rosedale
- 1. Arden Park
- 2. Art Center
- 3. Aviation Sub
- 4. Bagley
- 5. Barton-McFarland
- 6. Belle Isle
- 7. Belmont
- 8. Berg Lahser
- 9. Blackstone Park
- 10. Boston Edison
- 11. Boynton
- 12. Briggs
- 13. Brightmoor
- 14. Brush Park
- 15. Carbon Works
- 16. Castle Rouge
- 17. Chaldean Town
- 18. Chandler Park
- 19. Conant Gardens

THE DETROIT THAT COULD BE

PLANS UNDER WAY
NOW WOULD CHANGE
THE FACE OF THE CITY



RENDERING BY
LARRY LIPSON FOR DD



By Matthew Emmons, U.S. Presswire

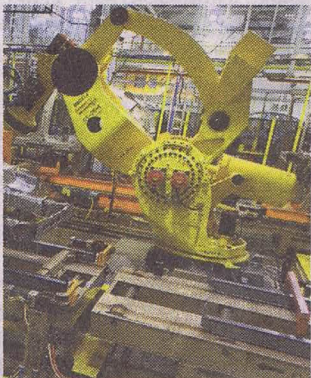
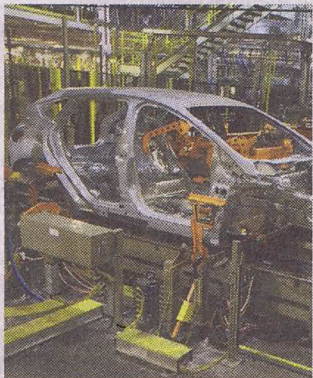


By Leon Halip, Getty Images

DETROIT RISING



By Tim Fuller, U.S. Presswire



By J. Kyle Keener for USA TODAY



Rick Osentoski AP

Driving Detroit: The Quest for Respect in the Motor City

George Galster

Greater Detroit is stunning. It is stunning in its legacy of industrial, labor organizing, and artistic achievements juxtaposed against its legacy of race and class warfare.

It is stunning in its contrasts between poverty and plenty, decay and splendor, ugliness and beauty, hate and love, despair and resilience, all implausibly proximate on the urban landscape.

It is stunning in that it has represented to the world both the best and worst of what cities can be, all within the span of half a century.

Data Driven Detroit (D3)

WWW.DATADRIVENDETROIT.ORG

Kurt Metzger

kurt@datadrivendetroit.org

Tech Town
440 Burroughs, #164
Detroit, MI 48202
313-390-4124